

## RPS19BP1 Polyclonal Antibody

**catalog number: E-AB-64510**

**Note:** Centrifuge before opening to ensure complete recovery of vial contents.

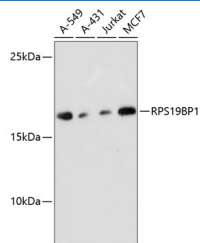
### Description

<b>Reactivity</b>	Human;Mouse;Rat
<b>Immunogen</b>	Recombinant fusion protein of human RPS19BP1 (NP_919307.1).
<b>Host</b>	Rabbit
<b>Isotype</b>	IgG
<b>Purification</b>	Affinity purification
<b>Buffer</b>	Phosphate buffered solution, pH 7.4, containing 0.05% stabilizer and 50% glycerol.

### Applications

Applications	Recommended Dilution
<b>WB</b>	1:500-1:2000
<b>IF</b>	1:50-1:200

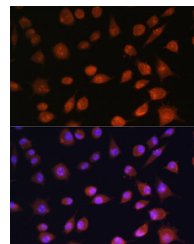
### Data



Western blot analysis of extracts of various cell lines using RPS19BP1 Polyclonal Antibody at dilution of 1:3000.

**Observed-MW:20 kDa**

**Calculated-MW:15 kDa**



Immunofluorescence analysis of L929 cells using RPS19BP1 Polyclonal Antibody at dilution of 1:100. Blue: DAPI for nuclear staining.

### Preparation & Storage

<b>Storage</b>	Store at -20°C Valid for 12 months. Avoid freeze / thaw cycles.
<b>Shipping</b>	The product is shipped with ice pack, upon receipt, store it immediately at the temperature recommended.

### Background

RPS19BP1 (Ribosomal Protein S19 Binding Protein 1) is a Protein Coding gene. Diseases associated with RPS19BP1 include Inhibited Female Orgasm and Amyotrophic Lateral Sclerosis 1. Among its related pathways are Cellular response to heat stress and Cellular Senescence (REACTOME). Gene Ontology (GO) annotations related to this gene include enzyme binding.

### For Research Use Only