

## Gelsolin Polyclonal Antibody

catalog number: **E-AB-40539**

**Note:** Centrifuge before opening to ensure complete recovery of vial contents.

### Description

<b>Reactivity</b>	Human;Mouse;Rat;Zebrafish
<b>Immunogen</b>	Recombinant human Gelsolin protein expressed by E.coli
<b>Host</b>	Rabbit
<b>Isotype</b>	IgG
<b>Purification</b>	Antigen Affinity Purification
<b>Buffer</b>	PBS with 0.05% Proclin300, 1% protective protein and 50% glycerol, pH7.4

### Applications Recommended Dilution

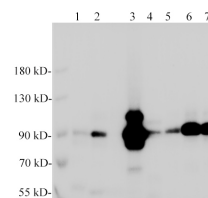
<b>WB</b>	1:1000-2000
-----------	-------------

### Data



Western blot of Zebrafish whole lysates with anti-Gelsolin rabbit polyclonal antibody at dilution of 1:1000.

**Observed-MW:80 kDa**  
**Calculated-MW:80 kDa**



Western blotting of anti-Gelsolin polyclonal antibody at dilution of 1:1000. Lane1: HeLa, Lane2: A549, Lane3: MCF7, Lane4:PC-12, Lane5: Mouse spleen, Lane6: Rat lung, Lane7: Mouse lung

**Observed-MW:80 kDa**  
**Calculated-MW:80 kDa**

### Preparation & Storage

<b>Storage</b>	Store at -20°C Valid for 12 months. Avoid freeze / thaw cycles.
<b>Shipping</b>	The product is shipped with ice pack,upon receipt,store it immediately at the temperature recommended.

### Background

Gelsolin (GSN) is an actin binding protein that regulates actin-severing/depolymerizing in a calcium dependent manner, and acts as a multifunctional regulator for cell metabolism and survival. Gelsolin exists in two isoforms: a cytoplasmic gelsolin (cGSN);

### For Research Use Only