

## Recombinant Human IL2Ra/CD25 Protein (Fc Tag)

**Catalog Number:** PKSH032570

**Note:** Centrifuge before opening to ensure complete recovery of vial contents.

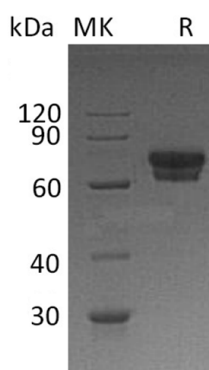
### Description

<b>Species</b>	Human
<b>Source</b>	HEK293 Cells-derived Human IL2Ra;CD25 protein Glu22-Cys213, with an C-terminal Fc
<b>Calculated MW</b>	48.9 kDa
<b>Observed MW</b>	60-80 kDa
<b>Accession</b>	P01589
<b>Bio-activity</b>	Loaded Human IL-2-His on HIS1K Biosensor, can bind Human IL-2RA-Fc with an affinity constant of 3.06 nM as determined in BLI assay.

### Properties

<b>Purity</b>	> 95 % as determined by reducing SDS-PAGE.
<b>Endotoxin</b>	< 1.0 EU per µg of the protein as determined by the LAL method.
<b>Storage</b>	Generally, lyophilized proteins are stable for up to 12 months when stored at -20 to -80 °C. Reconstituted protein solution can be stored at 4-8°C for 2-7 days. Aliquots of reconstituted samples are stable at < -20°C for 3 months.
<b>Shipping</b>	This product is provided as lyophilized powder which is shipped with ice packs.
<b>Formulation</b>	Lyophilized from a 0.2 µm filtered solution of PBS, pH 7.4. Normally 5% - 8% trehalose, mannitol and 0.01% Tween 80 are added as protectants before lyophilization.
	Please refer to the specific buffer information in the printed manual.
<b>Reconstitution</b>	Please refer to the printed manual for detailed information.

### Data



> 95 % as determined by reducing SDS-PAGE.

### Background

Interleukin-2 receptor subunit alpha (IL2RA) is a single-pass type I membrane protein; contains 2 Sushi (CCP/SCR) domains. The interleukin 2 (IL2) receptor alpha (IL2RA) and beta (IL2RB) chains; together with the common gamma chain (IL2RG); constitute the high-affinity IL2 receptor. Homodimeric alpha chains (IL2RA) result in low-affinity receptor; while homodimeric beta (IL2RB) chains produce a medium-affinity receptor. Normally an integral-membrane protein; soluble IL2RA has been isolated and determined to result from extracellular proteolysis.

### For Research Use Only