

## Vimentin Polyclonal Antibody

**catalog number: E-AB-70081**

**Note:** Centrifuge before opening to ensure complete recovery of vial contents.

### Description

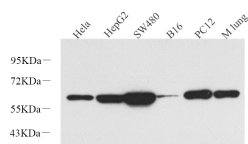
<b>Reactivity</b>	Human;Mouse;Rat
<b>Immunogen</b>	KLH conjugated Synthetic peptide corresponding to Mouse vimentin
<b>Host</b>	Rabbit
<b>Isotype</b>	IgG
<b>Purification</b>	Affinity purification
<b>Buffer</b>	Phosphate buffered solution, pH 7.4, containing 0.05% stabilizer, 1% protein protectant and 50% glycerol.

### Applications

Applications	Recommended Dilution
<b>WB</b>	1:500-1:2000
<b>IHC</b>	1:200-1:800

### Recommended Dilution

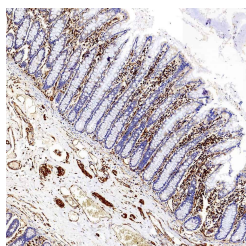
### Data



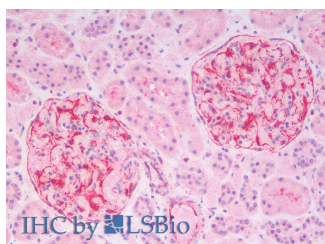
Western Blot analysis of various samples using Vimentin Polyclonal Antibody at dilution of 1:1000.

**Observed-MW:57 kDa**

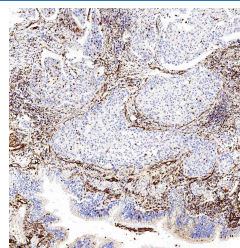
**Calculated-MW:57 kDa**



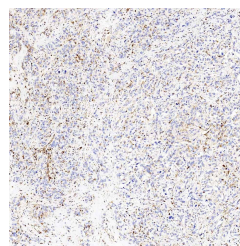
Immunohistochemistry analysis of paraffin-embedded Human colon using Vimentin Polyclonal Antibody at dilution of 1:300.



IHC by Elabscience



Immunohistochemistry analysis of paraffin-embedded Human lung cancer using Vimentin Polyclonal Antibody at dilution of 1:300.



Immunohistochemistry analysis of paraffin-embedded Human liver cancer using Vimentin Polyclonal Antibody at dilution of 1:300.

### For Research Use Only

Toll-free: 1-888-852-8623  
Web: [www.elabscience.com](http://www.elabscience.com)

Tel: 1-832-243-6086  
Email: [techsupport@elabscience.com](mailto:techsupport@elabscience.com)

Fax: 1-832-243-6017

Rev. V1.7

Immunohistochemistry analysis of paraffin-embedded  
Human Kidney using Vimentin Polyclonal  
Antibody(Elabscience Product Detected by Lifespan).

## Preparation & Storage

**Storage**

Store at -20°C Valid for 12 months. Avoid freeze / thaw cycles.

**Shipping**

The product is shipped with ice pack, upon receipt, store it immediately at the temperature recommended.

## Background

Vimentin, also named as VIM, belongs to the intermediate filament family. Vimentin is class-III intermediate filaments found in various non-epithelial cells, especially mesenchymal cells. Vimentin is important for stabilizing the architecture of the cytoplasm. Monocyte-derived macrophages secrete vimentin into the extracellular space in vitro. Secretion of vimentin was enhanced by the proinflammatory cytokine tumor necrosis factor- $\alpha$  (TNF $\alpha$ ; 191160) and inhibited by the antiinflammatory cytokine IL10 (124092), suggesting that vimentin is involved in the immune response. Vimentin has specialized functions that contribute to specific dynamic cellular processes. As a phosphoprotein, 55-60 kDa of vimentin proteins can be observed due to the different phosphorylation level.

## For Research Use Only