

PE/Elab Fluor® 594 Anti-Human CD166 Antibody[3A6]

Catalog Number: AN00426P

Note: Centrifuge before opening to ensure complete recovery of vial contents.

Description

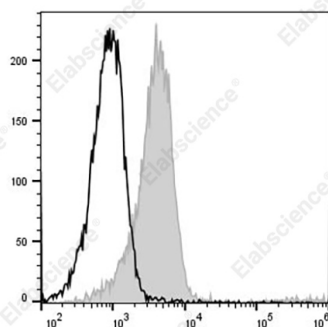
Reactivity	Human
Host	Mouse
Isotype	Mouse IgG1, κ
Clone No.	3A6
Isotype Control	PE/Elab Fluor® 594 Mouse IgG1, κ Isotype Control[MOPC-21] [Product E-AB-F09792P]
Conjugation	PE/Elab Fluor® 594
Conjugation Information	PE/Elab Fluor® 594 is designed to be excited by the blue (488 nm), Green (532 nm) and yellow-green (561 nm) lasers and detected using an optical filter centered near 620 nm (e.g., a 610/20 nm bandpass filter).
Storage Buffer	Phosphate buffered solution, pH 7.2, containing 0.09% stabilizer and 1% protein protectant.

Applications

Recommended usage

FCM	Each lot of this antibody is quality control tested by flow cytometric analysis. The amount of the reagent is suggested to be used 5 µL of antibody per test (million cells in 100 µL staining volume or per 100 µL of whole blood). Please check your vial before the experiment. Since applications vary, the appropriate dilutions must be determined for individual use.
------------	---

Data



Staining of normal human peripheral blood cells with PE/Elab Fluor® 594 Anti-Human CD166 Antibody[3A6] (filled gray histogram) or PE/Elab Fluor® 594 Mouse IgG1, κ Isotype Control (empty black histogram). Cells in the monocytes gate were used for analysis.

Preparation & Storage

Storage	Keep as concentrated solution. This product can be stored at 2-8°C for 12 months. Please protected from prolonged exposure to light and do not freeze.
Shipping	Ice bag

Antigen Information

Alternate Names	CD6 ligand;Activated Leukocyte Cell Adhesion Molecule (ALCAM)
------------------------	---

For Research Use Only

Toll-free: 1-888-852-8623
Web: www.elabscience.com

Tel: 1-832-243-6086
Email: techsupport@elabscience.com

Fax: 1-832-243-6017

Rev. V1.7

Uniprot ID

Q13740

Gene ID

214

Background

CD166, also known as the CD6 ligand or the Activated Leukocyte Cell Adhesion Molecule (ALCAM), is a 100-105 kD transmembrane glycoprotein. It belongs to the Ig superfamily of proteins and expressed on activated T cells, activated monocytes, epithelial cells, fibroblasts, and neurons. CD166 plays an important role in mediating adhesion interactions between thymic epithelial cells and CD6+ cells during intrathymic T cell development. Recently CD166 has also been used as a potential cancer stem cell marker. The antibody reacts with human activated leukocyte cell adhesion molecule (ALCAM).