

HSD17B8 Polyclonal Antibody

catalog number: E-AB-11301

Note: Centrifuge before opening to ensure complete recovery of vial contents.

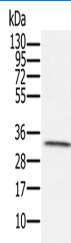
Description

Reactivity	Human;Mouse;Rat
Immunogen	Recombinant protein of human HSD17B8
Host	Rabbit
Isotype	IgG
Purification	Affinity purification
Buffer	Phosphate buffered solution, pH 7.4, containing 0.05% stabilizer and 50% glycerol.

Applications Recommended Dilution

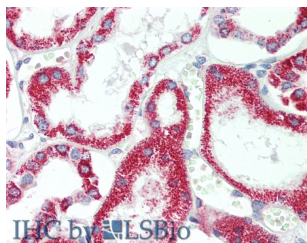
WB	1:500-1:2000
IHC	1:50-1:200

Data

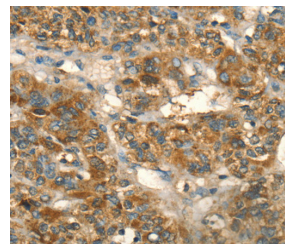


Western Blot analysis of Human testis tissue using HSD17B8 Polyclonal Antibody at dilution of 1:650

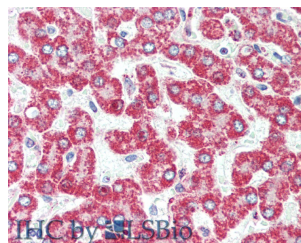
Calculated-MW:27 kDa



Immunohistochemistry of paraffin-embedded Human Kidney using HSD17B8 Polyclonal Antibody at dilution of 1:100(Elabscience Product Detected by Lifespan).



Immunohistochemistry of paraffin-embedded Human liver cancer using HSD17B8 Polyclonal Antibody at dilution of 1:55



Immunohistochemistry of paraffin-embedded Human liver cancer using HSD17B8 Polyclonal Antibody at dilution of 1:100(Elabscience Product Detected by Lifespan).

Preparation & Storage

Storage	Store at -20°C Valid for 12 months. Avoid freeze / thaw cycles.
Shipping	The product is shipped with ice pack, upon receipt, store it immediately at the temperature recommended.

Background

For Research Use Only

In mice, the Ke6 protein is a 17-beta-hydroxysteroid dehydrogenase that can regulate the concentration of biologically active estrogens and androgens. It is preferentially an oxidative enzyme and inactivates estradiol, testosterone, and dihydrotestosterone. However, the enzyme has some reductive activity and can synthesize estradiol from estrone. The protein encoded by this gene is similar to Ke6 and is a member of the short-chain dehydrogenase superfamily. An alternatively spliced transcript of this gene has been detected, but the full-length nature of this variant has not been determined.

For Research Use Only

Toll-free: 1-888-852-8623
Web: www.elabscience.com

Tel: 1-832-243-6086
Email: techsupport@elabscience.com

Fax: 1-832-243-6017

Rev. V1.8