

GIPC1 Polyclonal Antibody

catalog number: E-AB-19910

Note: Centrifuge before opening to ensure complete recovery of vial contents.

Description

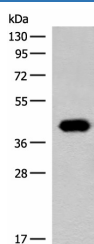
| | |
|---------------------|--|
| Reactivity | Human;Mouse;Rat |
| Immunogen | Synthetic peptide of human GIPC1 |
| Host | Rabbit |
| Isotype | IgG |
| Purification | Antigen affinity purification |
| Conjugation | Unconjugated |
| Buffer | Phosphate buffered solution, pH 7.4, containing 0.05% stabilizer and 50% glycerol. |

Applications

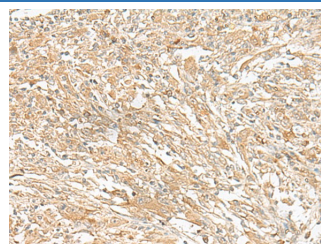
Recommended Dilution

| | |
|------------|--------------|
| WB | 1:500-1:2000 |
| IHC | 1:40-1:200 |

Data



Western blot analysis of Hela cell lysate using GIPC1 Polyclonal Antibody at dilution of 1:400
Observed-MW:Refer to figures
Calculated-MW:36 kDa



Immunohistochemistry of paraffin-embedded Human liver cancer tissue using GIPC1 Polyclonal Antibody at dilution of 1:50(×200)

Preparation & Storage

| | |
|-----------------|--|
| Storage | Store at -20°C Valid for 12 months. Avoid freeze / thaw cycles. |
| Shipping | The product is shipped with ice pack, upon receipt, store it immediately at the temperature recommended. |

Background

GIPC1 is a scaffolding protein that regulates cell surface receptor expression and trafficking.