

Recombinant Cdc27 Monoclonal Antibody

catalog number: **AN301730L**

Note: Centrifuge before opening to ensure complete recovery of vial contents.

Description

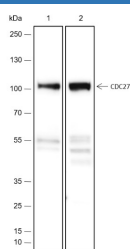
Reactivity	Human;Rat;
Immunogen	Recombinant human Cdc27 fragment
Host	Rabbit
Isotype	IgG, κ
Clone	A438
Purification	Protein A purified
Buffer	PBS, 50% glycerol, 0.05% Proclin 300, 0.05% protein protectant.

Applications

Recommended Dilution

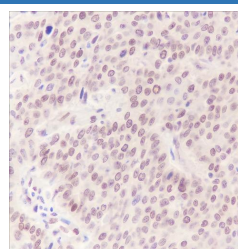
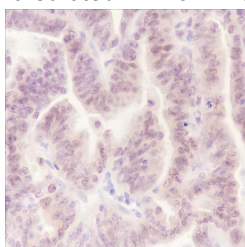
WB	1:1000-1:5000
IHC	1:200-1:1000
IF	1:50
FCM	1:50-1:100

Data

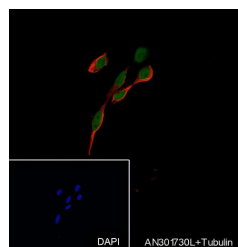


Western Blot with Cdc27 Monoclonal Antibody at dilution of 1:5000. Lane 1: MCF-7, Lane 2: BRL

Observed-MW:92 kDa
Calculated-MW:92 kDa

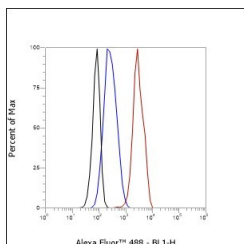


Immunohistochemistry of paraffin-embedded Human uterine cancer tissue using Cdc27 Monoclonal Antibody at dilution of 1:1000.



Immunohistochemistry of paraffin-embedded Human ovarian cancer tissue using Cdc27 Monoclonal Antibody at dilution of 1:1000.

Immunofluorescent analysis of (4% Paraformaldehyde) fixed 293T cells using anti-Cdc27 Monoclonal Antibody at dilution of 1:50.



For Research Use Only

Toll-free: 1-888-852-8623
Web: www.elabscience.com

Tel: 1-832-243-6086
Email: techsupport@elabscience.com

Fax: 1-832-243-6017

Rev. V1.0

Flow cytometric analysis of human Cdc27 expression on K562 cells. Cells were stained with purified anti-Human Cdc27, then a Alexa Fluor 488-conjugated second step antibody. The histogram were derived from events with the forward and side light-scatter characteristics of intact cells.

Preparation & Storage

Storage Store at -20°C Valid for 12 months. Avoid freeze / thaw cycles.
Shipping Ice bag

Background

Cell division cycle protein 27 homolog (CDC27) is a component of the anaphase promoting complex/cyclosome (APC/C), a cell cycle-regulated E3 ubiquitin ligase that controls progression through mitosis and the G1 phase of the cell cycle. The APC/C complex acts by mediating ubiquitination and subsequent degradation of target proteins: it mainly mediates the formation of 'Lys-11'-linked polyubiquitin chains and, to a lower extent, the formation of 'Lys-48'- and 'Lys-63'-linked polyubiquitin chains.

For Research Use Only