

Recombinant SMARCA2 Monoclonal Antibody

catalog number: E-AB-81511

Note: Centrifuge before opening to ensure complete recovery of vial contents.

Description

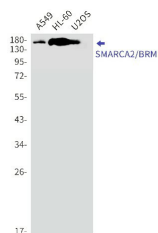
Reactivity	Human
Immunogen	A synthetic peptide of human SMARCA2/BRM
Host	Rabbit
Isotype	IgG
Clone	R02-3E2
Purification	Affinity Purified
Buffer	50mM Tris-Glycine(pH 7.4), 0.15M NaCl, 40% Glycerol, 0.05% stabilizer and 0.05% protective protein.

Applications

Recommended Dilution

WB	1:500-1:1000
IHC	1:50-1:100

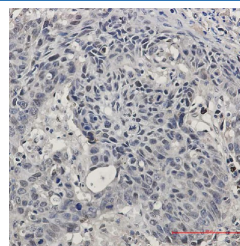
Data



Western blot detection of SMARCA2/BRM in A549, HL-60, U2OS cell lysates using SMARCA2/BRM Rabbit mAb (1:1000 diluted). Predicted band size: 181kDa. Observed band size: 190kDa.

Observed-MW: 190 kDa

Calculated-MW: 181 kDa



Immunohistochemistry of SMARCA2/BRM in paraffin-embedded Human lung cancer tissue using SMARCA2/BRM Rabbit mAb at dilution 1:50

Preparation & Storage

Storage	Store at -20°C Valid for 12 months. Avoid freeze / thaw cycles.
Shipping	The product is shipped with ice pack, upon receipt, store it immediately at the temperature recommended.

Background

The protein encoded by this gene is a member of the SWI/SNF family of proteins and is highly similar to the brahma protein of *Drosophila*. Members of this family have helicase and ATPase activities and are thought to regulate transcription of certain genes by altering the chromatin structure around those genes. The encoded protein is part of the large ATP-dependent chromatin remodeling complex SNF/SWI, which is required for transcriptional activation of genes normally repressed by chromatin.

For Research Use Only