

## Recombinant ASF1B Monoclonal Antibody

catalog number: **AN300451P**

**Note:** *Centrifuge before opening to ensure complete recovery of vial contents.*

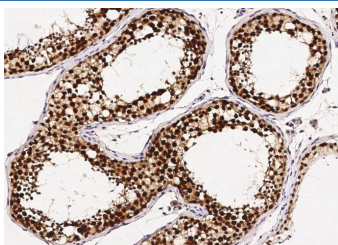
### Description

<b>Reactivity</b>	Human
<b>Immunogen</b>	Recombinant Human ASF1B Protein
<b>Host</b>	Rabbit
<b>Isotype</b>	IgG
<b>Clone</b>	5H13
<b>Purification</b>	Protein A
<b>Buffer</b>	0.2 µm filtered solution in PBS

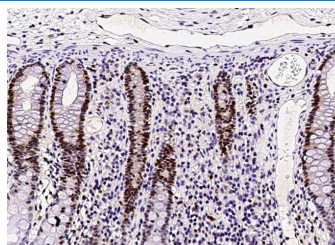
### Applications Recommended Dilution

<b>IHC-P</b>	1:100-1:500
--------------	-------------

### Data



Immunohistochemistry of paraffin-embedded human testis using ASF1B Monoclonal Antibody at dilution of 1:200.



Immunohistochemistry of paraffin-embedded human small intestine using ASF1B Monoclonal Antibody at dilution of 1:200.

### Preparation & Storage

<b>Storage</b>	This antibody can be stored at 2°C-8°C for one month without detectable loss of activity. Antibody products are stable for twelve months from date of receipt when stored at -20°C to -80°C. Preservative-Free. Avoid repeated freeze-thaw cycles.
<b>Shipping</b>	Ice bag

### Background

This gene encodes a member of the H3/H4 family of histone chaperone proteins and is similar to the anti-silencing function-1 gene in yeast. The encoded protein is the substrate of the tousel-like kinase family of cell cycle-regulated kinases, and may play a key role in modulating the nucleosome structure of chromatin by ensuring a constant supply of histones at sites of nucleosome assembly.

### For Research Use Only