

Recombinant Human Reticulocalbin 3/RCN3 Protein (aa 1-324, His Tag)

Catalog Number: PKSH030608

Note: Centrifuge before opening to ensure complete recovery of vial contents.

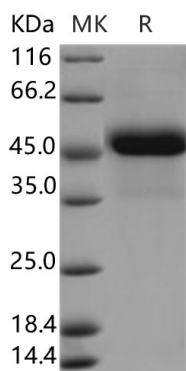
Description

| | |
|----------------------|---|
| Species | Human |
| Source | HEK293 Cells-derived Human Reticulocalbin 3/RCN3 protein Met 1-His324, with an C-terminal His |
| Calculated MW | 36.2 kDa |
| Accession | Q96D15 |
| Bio-activity | Not validated for activity |

Properties

| | |
|-----------------------|---|
| Purity | > 90 % as determined by reducing SDS-PAGE. |
| Endotoxin | < 1.0 EU per µg of the protein as determined by the LAL method. |
| Storage | Generally, lyophilized proteins are stable for up to 12 months when stored at -20 to -80°C. Reconstituted protein solution can be stored at 4-8°C for 2-7 days. Aliquots of reconstituted samples are stable at < -20°C for 3 months. |
| Shipping | This product is provided as lyophilized powder which is shipped with ice packs. |
| Formulation | Lyophilized from sterile PBS, pH 7.4 Normally 5% - 8% trehalose, mannitol and 0.01% Tween 80 are added as protectants before lyophilization. Please refer to the specific buffer information in the printed manual. |
| Reconstitution | Please refer to the printed manual for detailed information. |

Data



> 90 % as determined by reducing SDS-PAGE.

Background

RCN3 belongs to the CREC family which contains multiple EF-hand Ca²⁺-binding proteins localized to the secretory pathway. RCN3 sequence is characterized by the presence of five Arg-Xaa-Xaa-Arg motifs; which represents the target sequence of subtilisin-like proprotein convertases (SPCs). SPCs are a family of seven structurally related serine endoproteases that are involved in the proteolytic activation of proproteins. RCN3 is transiently associated with proPACE4; but not with mature PACE4. Inhibition of PACE4 maturation by a Ca²⁺ ionophore resulted in accumulation of the proPACE4-RCN-3 complex in cells. It has been proposed that elective and transient association of RCN3 with the precursor of PACE4 plays an important role in the biosynthesis of PACE4.

For Research Use Only

Toll-free: 1-888-852-8623
Web: www.elabscience.com

Tel: 1-832-243-6086
Email: techsupport@elabscience.com

Fax: 1-832-243-6017