

## CK5P3 Polyclonal Antibody

**catalog number: D-AB-10307L**

**Note:** Centrifuge before opening to ensure complete recovery of vial contents.

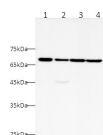
### Description

<b>Reactivity</b>	Human
<b>Immunogen</b>	Recombinant Human CK5P3 Protein expressed by E.coli
<b>Host</b>	Rabbit
<b>Isotype</b>	IgG
<b>Purification</b>	Antigen Affinity Purification
<b>Buffer</b>	PBS with 0.05% Proclin300, 1% protective protein and 50% glycerol, pH7.4

### Applications Recommended Dilution

<b>WB</b>	1:500-1:1000
<b>IHC</b>	1:100-1:400

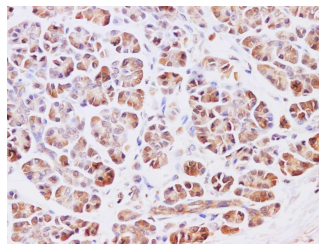
### Data



Western blot with CK5P3 Polyclonal Antibody at dilution of 1:1000. lane 1: Jurkat whole cell lysate, lane 2: HeLa whole cell lysate, lane 3: A431 whole cell lysate, lane 4: HEK-293T whole cell lysate

**Observed-MW: 57 kDa**

**Calculated-MW: 57 kDa**



Immunohistochemistry of paraffin-embedded Human pancreas using CK5P3 Polyclonal Antibody at dilution of 1:200

### Preparation & Storage

<b>Storage</b>	Store at -20°C Valid for 12 months. Avoid freeze / thaw cycles.
<b>Shipping</b>	The product is shipped with ice pack, upon receipt, store it immediately at the temperature recommended.

### Background

This gene encodes a protein that has been reported to function in signaling pathways governing transcriptional regulation and cell cycle progression. It may play a role in tumorigenesis and metastasis. A pseudogene of this gene is located on the long arm of chromosome 20. Alternative splicing results in multiple transcript variants that encode different isoforms.

### For Research Use Only