

Recombinant c Met Monoclonal Antibody

catalog number: **E-AB-81537**

Note: Centrifuge before opening to ensure complete recovery of vial contents.

Description

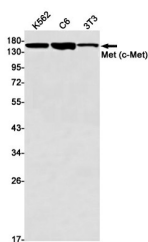
Reactivity	Human;Mouse;Rat
Immunogen	A synthetic peptide of human Met (c-Met)
Host	Rabbit
Isotype	IgG
Clone	R02-4D6
Purification	Affinity Purified
Buffer	50mM Tris-Glycine(pH 7.4), 0.15M NaCl, 40% Glycerol, 0.05% stabilizer and 0.05% protective protein.

Applications

Recommended Dilution

WB	1:1000-1:2000
IHC	1:20-1:50
IF	1:20-1:200

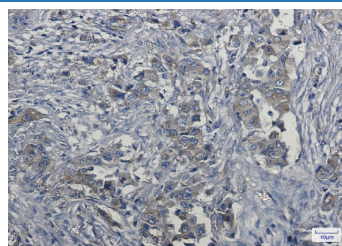
Data



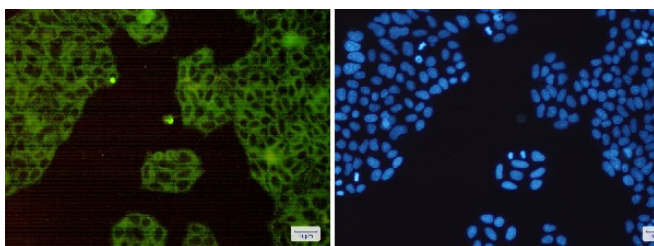
Western blot detection of Met (c-Met) in K562,C6,3T3 cell lysates using Met (c-Met) Rabbit mAb(1:1000 diluted).Predicted band size:156kDa.Observed band size:170kDa.

Observed-MW:170 kDa

Calculated-MW:156 kDa



Immunohistochemistry of Met (c-Met) in paraffin-embedded Human lung cancer tissue using Met (c-Met) Rabbit mAb at dilution 1:50



Immunofluorescence of Met (c-Met)(green) in Hela cells using Met (c-Met) Rabbit mAb at dilution 1:200, and DAPI(blue)

Preparation & Storage

Storage	Store at -20°C Valid for 12 months. Avoid freeze / thaw cycles.
Shipping	The product is shipped with ice pack,upon receipt,store it immediately at the temperature recommended.

For Research Use Only

Background

The proto-oncogene MET product is the hepatocyte growth factor receptor and encodes tyrosine-kinase activity. The primary single chain precursor protein is post-translationally cleaved to produce the alpha and beta subunits, which are disulfide linked to form the mature receptor. Various mutations in the MET gene are associated with papillary renal carcinoma. Two transcript variants encoding different isoforms have been found for this gene.

For Research Use Only