

(KO Validated) KRAS Polyclonal Antibody

catalog number: E-AB-93087

Note: Centrifuge before opening to ensure complete recovery of vial contents.

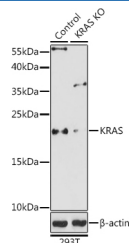
Description

Reactivity	Human;Mouse;Rat
Immunogen	Recombinant fusion protein of human KRAS
Host	Rabbit
Isotype	IgG
Purification	Affinity purification
Buffer	Phosphate buffered solution, pH 7.4, containing 0.05% stabilizer and 50% glycerol.

Applications

WB	1:500-1:2000
IF	1:50-1:200

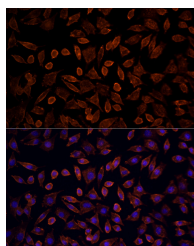
Data



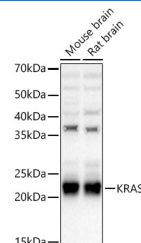
Western blot analysis of extracts from normal (control) and KRAS knockout (KO) 293T cells, using KRAS Polyclonal Antibody at 1:1000 dilution.

Observed-MW:21 kDa

Calculated-MW:21 kDa



Immunofluorescence analysis of L929 cells using [KO Validated] KRAS Polyclonal Antibody at dilution of 100 (40x lens). Blue: DAPI for nuclear staining.



Western blot analysis of various lysates using KRAS Polyclonal Antibody at 1:3000 dilution.

Observed-MW:21 kDa

Calculated-MW:21 kDa

Preparation & Storage

Storage	Store at -20°C Valid for 12 months. Avoid freeze / thaw cycles.
Shipping	The product is shipped with ice pack, upon receipt, store it immediately at the temperature recommended.

Background

For Research Use Only

This gene, a Kirsten ras oncogene homolog from the mammalian ras gene family, encodes a protein that is a member of the small GTPase superfamily. A single amino acid substitution is responsible for an activating mutation. The transforming protein that results is implicated in various malignancies, including lung adenocarcinoma, mucinous adenoma, ductal carcinoma of the pancreas and colorectal carcinoma. Alternative splicing leads to variants encoding two isoforms that differ in the C-terminal region.

For Research Use Only

Toll-free: 1-888-852-8623
Web: www.elabscience.com

Tel: 1-832-243-6086
Email: techsupport@elabscience.com

Fax: 1-832-243-6017

Rev. V1.7