

NEB Polyclonal Antibody

catalog number: E-AB-12799

Note: Centrifuge before opening to ensure complete recovery of vial contents.

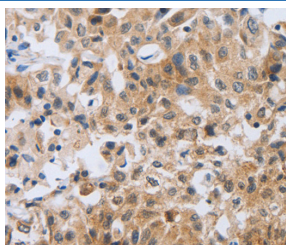
Description

Reactivity	Human
Immunogen	Synthetic peptide of human NEB
Host	Rabbit
Isotype	IgG
Purification	Affinity purification
Buffer	Phosphate buffered solution, pH 7.4, containing 0.05% stabilizer and 50% glycerol.

Applications

Applications	Recommended Dilution
IHC	1:50-1:200

Data



Immunohistochemistry of paraffin-embedded Human lung cancer tissue using NEB Polyclonal Antibody at dilution 1:80

Preparation & Storage

Storage	Store at -20°C Valid for 12 months. Avoid freeze / thaw cycles.
Shipping	The product is shipped with ice pack, upon receipt, store it immediately at the temperature recommended.

Background

This gene encodes nebulin, a giant protein component of the cytoskeletal matrix that coexists with the thick and thin filaments within the sarcomeres of skeletal muscle. In most vertebrates, nebulin accounts for 3 to 4% of the total myofibrillar protein. The encoded protein contains approximately 30-amino acid long modules that can be classified into 7 types and other repeated modules. Protein isoform sizes vary from 600 to 800 kD due to alternative splicing that is tissue-, species-, and developmental stage-specific. Of the 183 exons in the nebulin gene, at least 43 are alternatively spliced, although exons 143 and 144 are not found in the same transcript. Of the several thousand transcript variants predicted for nebulin, the RefSeq Project has decided to create three representative RefSeq records. Mutations in this gene are associated with recessive nemaline myopathy.

For Research Use Only