

Recombinant Human CEACAM1/CD66a Protein (His Tag)

Catalog Number: PKSH031410

Note: Centrifuge before opening to ensure complete recovery of vial contents.

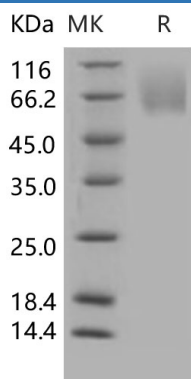
Description

Species	Human
Source	HEK293 Cells-derived Human CEACAM1/CD66a protein Met 1-Gly 428, with an C-terminal His
Calculated MW	45 kDa
Observed MW	65-85 kDa
Accession	NP_001020083.1
Bio-activity	1. Measured by its ability to bind biotinylated Human CEACAM6-His in functional ELISA. 2. Measured by its ability to bind biotinylated Human CEACAM8-His in functional ELISA.

Properties

Purity	> 95 % as determined by reducing SDS-PAGE.
Endotoxin	< 1.0 EU per µg of the protein as determined by the LAL method.
Storage	Generally, lyophilized proteins are stable for up to 12 months when stored at -20 to -80 °C. Reconstituted protein solution can be stored at 4-8°C for 2-7 days. Aliquots of reconstituted samples are stable at < -20°C for 3 months.
Shipping	This product is provided as lyophilized powder which is shipped with ice packs.
Formulation	Lyophilized from sterile PBS, pH 7.4 Normally 5% - 8% trehalose, mannitol and 0.01% Tween 80 are added as protectants before lyophilization. Please refer to the specific buffer information in the printed manual.
Reconstitution	Please refer to the printed manual for detailed information.

Data



> 95 % as determined by reducing SDS-PAGE.

Background

For Research Use Only

Toll-free: 1-888-852-8623
Web: www.elabscience.com

Tel: 1-832-243-6086
Email: techsupport@elabscience.com

Fax: 1-832-243-6017

Rev. V3.5

The carcinoembryonic-antigen-related cell-adhesion molecule (CEACAM) family of proteins has been implicated in various intercellular-adhesion and intracellular-signalling-mediated effects that govern the growth and differentiation of normal and cancerous cells. CEACAM1, also known as biliary glycoprotein I (BGP I) and CD66a, is a member of the carcinoembryonic antigen (CEA) gene family which belongs to the immunoglobulin superfamily. The highly glycosylated CEACAM1 contains one N-terminal V-type Ig-like domain and three C2-type Ig-like domains within its EC D, and one ITIM motif and a calmodulin binding site in the cytoplasmic region. CEACAM1 is a surface glycoprotein expressed on various blood cells, epithelial cells, and vascular cells. It was described as an adhesion molecule mediating cell adhesion via both homophilic and heterophilic manners, and was detected on leukocytes, epithelia, and endothelia. Studies have revealed that CEACAM1 performs actions in multiple cellular processes including tissue differentiation, angiogenesis, apoptosis, metastasis, as well as the modulation of innate and adaptive immune responses.