

# Recombinant Mouse BLAME/SLAMF8 Protein(Fc Tag)

Catalog Number: PDMM100133



**Note:** Centrifuge before opening to ensure complete recovery of vial contents.

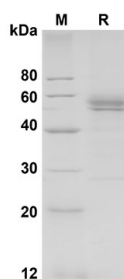
## Description

<b>Species</b>	Mouse
<b>Source</b>	Mammalian-derived Mouse BLAME/SLAMF8 proteins Val21-Asp231,with an C-terminal Fc
<b>Mol_Mass</b>	48.1 kDa
<b>Accession</b>	Q9D3G2
<b>Bio-activity</b>	Not validated for activity

## Properties

<b>Purity</b>	> 90% as determined by reducing SDS-PAGE.
<b>Endotoxin</b>	< 1.0 EU/mg of the protein as determined by the LAL method
<b>Storage</b>	Generally, lyophilized proteins are stable for up to 12 months when stored at -20 to -80 °C. Reconstituted protein solution can be stored at 4-8°C for 2-7 days. Aliquots of reconstituted samples are stable at < -20°C for 3 months.
<b>Shipping</b>	This product is provided as lyophilized powder which is shipped with ice packs.
<b>Formulation</b>	Lyophilized from a 0.2 µm filtered solution in PBS with 5% Trehalose and 5% Mannitol.
<b>Reconstitution</b>	It is recommended that sterile water be added to the vial to prepare a stock solution of 0.5 mg/mL. Concentration is measured by UV-Vis.

## Data



SDS-PAGE analysis of Mouse BLAME/SLAMF8 proteins ,  
2µg/lane of Recombinant Mouse BLAME/SLAMF8 proteins  
was resolved with SDS-PAGE under reducing conditions ,  
showing bands at 56 KD

## Background

### For Research Use Only

A Reliable Research Partner in Life Science and Medicine  
Tel:400-999-2100

Email:[techsupport@elabscience.cn](mailto:techsupport@elabscience.cn)

Web:[www.elabscience.cn](http://www.elabscience.cn)

Rev. V1.5

# Recombinant Mouse BLAME/SLAMF8 Protein(Fc Tag)

Catalog Number: PDMM100133



The signaling lymphocyte activation molecule (SLAM) family includes homophilic and heterophilic receptors that modulate both adaptive and innate immune responses. These receptors share a common ectodomain organization: a membrane-proximal immunoglobulin constant domain and a membrane-distal immunoglobulin variable domain that is responsible for ligand recognition. SLAM family of receptors is expressed by a wide range of immune cells. Through their cytoplasmic domain, SLAM family receptors associate with SLAM-associated protein (SAP)-related molecules, a group of cytoplasmic adaptors composed almost exclusively of an SRC homology 2 domain. SLAM family receptors, in association with SAP family adaptors, have crucial roles during normal immune reactions in innate and adaptive immune cells. Mouse SLAM family member 8, also known as B-lymphocyte activator macrophage expressed, BCM-like membrane protein, SLAMF8 and BLAME, is a single-pass type I membrane protein. It contains one Ig-like C2-type (immunoglobulin-like) domain. SLAMF8 / BLAME is expressed in lymph node, spleen, thymus and bone marrow. It may play a role in B-lineage commitment and/or modulation of signaling through the B-cell receptor.

## For Research Use Only

A Reliable Research Partner in Life Science and Medicine  
Tel:400-999-2100

Email:[techsupport@elabscience.cn](mailto:techsupport@elabscience.cn)

Web:[www.elabscience.cn](http://www.elabscience.cn)

Rev. V1.5