

## Recombinant Mouse Il17F Protein(Sumo Tag)

**Catalog Number: PDEM100141**

**Note:** Centrifuge before opening to ensure complete recovery of vial contents.

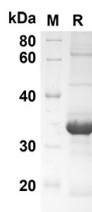
### Description

<b>Species</b>	Mouse
<b>Source</b>	E.coli-derived Mouse Il17f protein Arg29-Ala161, with an N-terminal Sumo
<b>Calculated MW</b>	27.5 kDa
<b>Observed MW</b>	34 kDa
<b>Accession</b>	Q7TNI7
<b>Bio-activity</b>	Not validated for activity

### Properties

<b>Purity</b>	> 90% as determined by reducing SDS-PAGE.
<b>Endotoxin</b>	< 10 EU/mg of the protein as determined by the LAL method
<b>Storage</b>	Generally, lyophilized proteins are stable for up to 12 months when stored at -20 to -80 °C. Reconstituted protein solution can be stored at 4-8°C for 2-7 days. Aliquots of reconstituted samples are stable at < -20°C for 3 months.
<b>Shipping</b>	This product is provided as lyophilized powder which is shipped with ice packs.
<b>Formulation</b>	Lyophilized from a 0.2 µm filtered solution in PBS with 5% Trehalose and 5% Mannitol.
<b>Reconstitution</b>	It is recommended that sterile water be added to the vial to prepare a stock solution of 0.5 mg/mL. Concentration is measured by UV-Vis.

### Data



SDS-PAGE analysis of Mouse Il17f proteins, 2 µg/lane of Recombinant Mouse Il17f proteins was resolved with an SDS-PAGE under reducing conditions, showing bands at 27.5 KD

### Background

### For Research Use Only

Toll-free: 1-888-852-8623  
Web: [www.elabscience.com](http://www.elabscience.com)

Tel: 1-832-243-6086  
Email: [techsupport@elabscience.com](mailto:techsupport@elabscience.com)

Fax: 1-832-243-6017

Rev. V1.7

Interleukin-17F (IL-17F) exists in a disulfide-linked heterodimer that belongs to the IL-17 family. IL-17F is expressed in activated, but not resting, CD4<sup>+</sup> T-cells and activated monocytes. Mouse and human IL-17F share 55% sequence identity. IL-17F has been shown to stimulate the production of several other cytokines, including IL-6, IL-8, and granulocyte colony-stimulating factor. IL-17F can regulate cartilage matrix turnover and stimulates PBMC and T-cell proliferation. IL-17F is also found to inhibit the angiogenesis of endothelial cells and induce endothelial cells to produce IL2, TGFβ1/TGFβ, and monocyte chemoattractant protein-1. Defects in IL-17F are the cause of familial candidiasis type 6 (CANDF6).