

Recombinant Human PDIA6 Protein (His Tag)

Catalog Number: PKSH032958

Note: Centrifuge before opening to ensure complete recovery of vial contents.

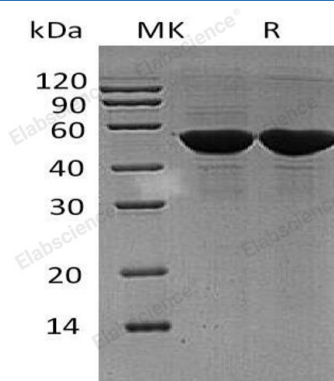
Description

Species	Human
Source	HEK293 Cells-derived Human PDIA6 protein Leu20-Leu440, with an C-terminal His
Calculated MW	47.2 kDa
Observed MW	52 kDa
Accession	Q15084
Bio-activity	Not validated for activity

Properties

Purity	> 95 % as determined by reducing SDS-PAGE.
Concentration	Subject to label value.
Endotoxin	< 1.0 EU per µg of the protein as determined by the LAL method.
Storage	Store at < -20°C, stable for 6 months. Please minimize freeze-thaw cycles.
Shipping	This product is provided as liquid. It is shipped at frozen temperature with blue ice/gel packs. Upon receipt, store it immediately at < -20°C.
Formulation	Supplied as a 0.2 µm filtered solution of 20mM Tris-HCl, 150mM NaCl, 10% Glycerol, pH 8.0.

Data



> 95 % as determined by reducing SDS-PAGE.

Background

Protein Disulfide-Isomerase A6 (PDIA6) is a 48.5kDa protein that belongs to the protein disulfide isomerase family (PDI). PDIA6 is an enzyme in the endoplasmic reticulum in eukaryotes which catalyzes the formation and breakage of disulfide bonds between cysteine residues within proteins as they fold. The PDIA6 expressed in platelets, its functions as a chaperone that inhibits aggregation of misfolded proteins. PDIA6 is part a large chaperone multiprotein complex comprising DNAJB11, HSP90B1, HSPA5, HYOU, PDIA2, PDIA4, PDIA6, PPIB, SDF2L1, UGT1A1. PDIA6 also plays a role in platelet aggregation and activation by agonists such as convulxin, collagen and thrombin.

For Research Use Only

Toll-free: 1-888-852-8623
Web: www.elabscience.com

Tel: 1-832-243-6086
Email: techsupport@elabscience.com

Fax: 1-832-243-6017