

Clusterin alpha chain Polyclonal Antibody

catalog number: E-AB-90529

Note: Centrifuge before opening to ensure complete recovery of vial contents.

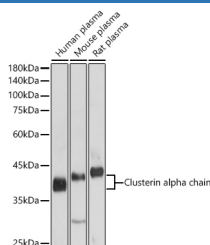
Description

Reactivity	Human;Mouse;Rat
Immunogen	Recombinant fusion protein of human Clusterin alpha chain
Host	Rabbit
Isotype	IgG
Purification	Affinity purification
Buffer	Phosphate buffered solution, pH 7.4, containing 0.05% stabilizer and 50% glycerol.

Applications

WB	1:500-1:2000
IHC	1:50-1:200

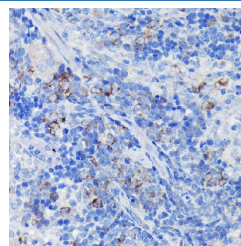
Data



Western blot analysis of extracts of various cell lines using Clusterin alpha chain Polyclonal Antibody at 1:1000 dilution.

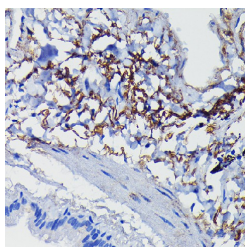
Observed-MV:37-40 kDa

Calculated-MV:32 kDa/48 kDa/52 kDa/53 kDa/57 kDa



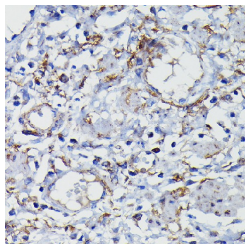
Immunohistochemistry of paraffin-embedded rat spleen using Clusterin alpha chain Polyclonal Antibody at dilution of 1:100 (40x lens). Perform high pressure antigen retrieval with 10 mM citrate buffer pH 6.0 before commencing with

IHC staining protocol.



Immunohistochemistry of paraffin-embedded human lung using Clusterin alpha chain Polyclonal Antibody at dilution of 1:100 (40x lens). Perform high pressure antigen retrieval with 10 mM citrate buffer pH 6.0 before commencing with

IHC staining protocol.



Immunohistochemistry of paraffin-embedded human colon carcinoma using Clusterin alpha chain Polyclonal Antibody at dilution of 1:100 (40x lens). Perform high pressure antigen retrieval with 10 mM citrate buffer pH 6.0 before commencing with IHC staining protocol.

For Research Use Only

Immunohistochemistry of paraffin-embedded human esophageal using Clusterin alpha chain Polyclonal Antibody at dilution of 1:100 (40x lens). Perform high pressure antigen retrieval with 10 mM citrate buffer pH 6.0 before commencing with IHC staining protocol.

Preparation & Storage

Storage	Store at -20°C Valid for 12 months. Avoid freeze / thaw cycles.
Shipping	The product is shipped with ice pack, upon receipt, store it immediately at the temperature recommended.

Background

The protein encoded by this gene is a secreted chaperone that can under some stress conditions also be found in the cell cytosol. It has been suggested to be involved in several basic biological events such as cell death, tumor progression, and neurodegenerative disorders. Alternate splicing results in both coding and non-coding variants.

For Research Use Only