

## Recombinant Cytochrome C Monoclonal Antibody

catalog number: **E-AB-81449**

**Note:** Centrifuge before opening to ensure complete recovery of vial contents.

### Description

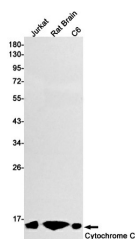
<b>Reactivity</b>	Human;Mouse;Rat
<b>Immunogen</b>	A synthetic peptide of human Cytochrome C
<b>Host</b>	Rabbit
<b>Isotype</b>	IgG
<b>Clone</b>	R09-6H3
<b>Purification</b>	Affinity Purified
<b>Buffer</b>	50mM Tris-Glycine(pH 7.4), 0.15M NaCl, 40% Glycerol, 0.05% stabilizer and 0.05% protective protein.

### Applications

### Recommended Dilution

<b>WB</b>	1:1000-1:2000
<b>IHC</b>	1:50-1:100

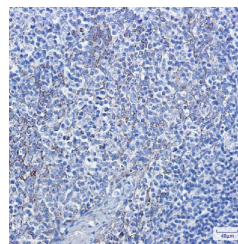
### Data



Western blot detection of Cytochrome C in Jurkat,Rat Brain,C6 cell lysates using Cytochrome C Rabbit mAb(1:1000 diluted).Predicted band size:12kDa.Observed band size:14kDa.

**Observed-MV:14 kDa**

**Calculated-MV:12 kDa**



Immunohistochemistry of Cytochrome C in paraffin-embedded Human tonsil using Cytochrome C Rabbit mAb at dilution 1:100

### Preparation & Storage

<b>Storage</b>	Store at -20°C Valid for 12 months. Avoid freeze / thaw cycles.
<b>Shipping</b>	The product is shipped with ice pack,upon receipt,store it immediately at the temperature recommended.

### Background

Cytochrome c is a 12-15 kDa electron transporting protein located in the inner mitochondrial membrane. Upon apoptotic stimulation,cytochrome c can be released from mitochondria into cytoplasm,resulting in caspase-3 activation and apoptosis. Measurement of cytochrome c release from the mitochondria is useful for detection of the onset of apoptosis in cells. In addition,cytochrome c can also leave cells and be detectable in extra-cellular medium of apoptotic cells and serum of cancer patients. The level of serum cytochrome c may serve as a prognostic maker during cancer therapy.

### For Research Use Only