

## Recombinant GNB2 Monoclonal Antibody

catalog number: **E-AB-81563**

**Note:** Centrifuge before opening to ensure complete recovery of vial contents.

### Description

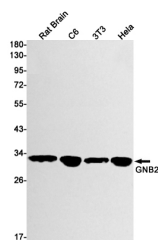
<b>Reactivity</b>	Human;Mouse;Rat
<b>Immunogen</b>	A synthetic peptide of human GNB2
<b>Host</b>	Rabbit
<b>Isotype</b>	IgG
<b>Clone</b>	R04-1A2
<b>Purification</b>	Affinity Purified
<b>Buffer</b>	50mM Tris-Glycine(pH 7.4), 0.15M NaCl, 40% Glycerol, 0.05% stabilizer and 0.05% protective protein.

### Applications

### Recommended Dilution

<b>WB</b>	1:1000-1:2000
<b>IHC</b>	1:20-1:100

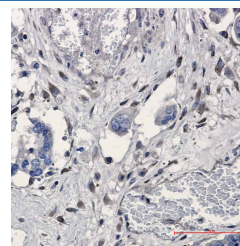
### Data



Western blot detection of GNB2 in Rat Brain, C6, 3T3, Hela cell lysates using GNB2 Rabbit mAb (1:1000 diluted). Predicted band size: 37 kDa. Observed band size: 32 kDa.

**Observed-MW: 32 kDa**

**Calculated-MW: 37 kDa**



Immunohistochemistry of GNB2 in paraffin-embedded Human Cholangiocarcinoma using GNB2 Rabbit mAb at dilution 1:20

### Preparation & Storage

<b>Storage</b>	Store at -20°C Valid for 12 months. Avoid freeze / thaw cycles.
<b>Shipping</b>	The product is shipped with ice pack, upon receipt, store it immediately at the temperature recommended.

### Background

Heterotrimeric guanine nucleotide-binding proteins (Gproteins), which integrate signals between receptors and effector proteins, are composed of an alpha, a beta, and a gamma subunit. These subunits are encoded by families of related genes. This gene encodes a beta subunit. Beta subunits are important regulators of alpha subunits, as well as of certain signal transduction receptors and effectors. This gene contains a trinucleotide (CCG) repeat length polymorphism in its 5' UTR.

### For Research Use Only