

## Recombinant Human PKC epsilon/PKCE Protein (His Tag)

**Catalog Number:** PKSH032964

**Note:** Centrifuge before opening to ensure complete recovery of vial contents.

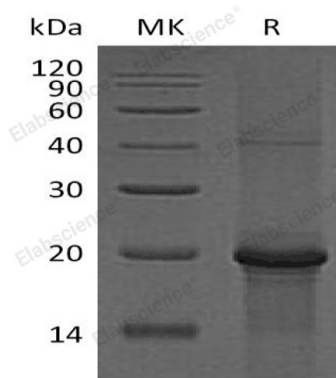
### Description

<b>Species</b>	Human
<b>Source</b>	E.coli-derived Human PKC epsilon;PKCE protein Gln580-Pro737, with an C-terminal His
<b>Calculated MW</b>	19.6 kDa
<b>Observed MW</b>	20 kDa
<b>Accession</b>	Q02156
<b>Bio-activity</b>	Not validated for activity

### Properties

<b>Purity</b>	> 90 % as determined by reducing SDS-PAGE.
<b>Concentration</b>	Subject to label value.
<b>Endotoxin</b>	< 1.0 EU per µg of the protein as determined by the LAL method.
<b>Storage</b>	Store at < -20°C, stable for 6 months. Please minimize freeze-thaw cycles.
<b>Shipping</b>	This product is provided as liquid. It is shipped at frozen temperature with blue ice/gel packs. Upon receipt, store it immediately at < - 20°C.
<b>Formulation</b>	Supplied as a 0.2 µm filtered solution of 20mM PB, 150mM NaCl, 1mM DTT, pH 7.4.

### Data



> 90 % as determined by reducing SDS-PAGE.

### Background

Protein Kinase C Epsilon type is a member of the serine- and threonine-specific protein kinase family that can be activated by calcium and the second messenger diacylglycerol. Protein Kinase C Epsilon contains these domains: one AGC-kinase C-terminal domain; one C2 domain; one protein kinase domain and two phorbol-ester/DAG-type zinc finger s. Protein Kinase C Epsilon phosphorylate a variety of protein targets and has been identified to participate in diverse cellular signaling pathways. It has many different cellular functions; such as neuron channel activation; apoptosis; cardioprotection from ischemia; heat shock response; as well as insulin exocytosis. Protein Kinase C Epsilon also serves as the receptor for phorbol esters; a class of tumor promoters.

### For Research Use Only