

## SMOC1 Polyclonal Antibody

catalog number: E-AB-18835

**Note:** Centrifuge before opening to ensure complete recovery of vial contents.

### Description

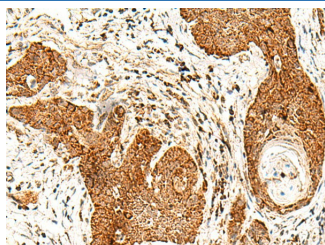
Reactivity	Human;Mouse
Immunogen	Fusion protein of human SMOC1
Host	Rabbit
Isotype	IgG
Purification	Antigen affinity purification
Conjugation	Unconjugated
Buffer	Phosphate buffered solution, pH 7.4, containing 0.05% stabilizer and 50% glycerol.

### Applications

### Recommended Dilution

IHC	1:50-1:300
-----	------------

### Data



Immunohistochemistry of paraffin-embedded Human esophagus cancer tissue using SMOC1 Polyclonal Antibody at dilution of 1:50(×200)

### Preparation & Storage

Storage	Store at -20°C Valid for 12 months. Avoid freeze / thaw cycles.
Shipping	The product is shipped with ice pack, upon receipt, store it immediately at the temperature recommended.

### Background

This gene encodes a multi-domain secreted protein that may have a critical role in ocular and limb development. Mutations in this gene are associated with microphthalmia and limb anomalies. Alternatively spliced transcript variants encoding different isoforms have been found for this gene.