

PPEF1 Polyclonal Antibody

catalog number: **E-AB-53001**

Note: Centrifuge before opening to ensure complete recovery of vial contents.

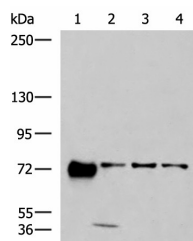
Description

Reactivity	Human
Immunogen	Fusion protein of human PPEF1
Host	Rabbit
Isotype	IgG
Purification	Antigen affinity purification
Buffer	Phosphate buffered solution, pH 7.4, containing 0.05% stabilizer and 50% glycerol.

Applications

Applications	Recommended Dilution
WB	1:1000-1:5000
IHC	1:80-1:400

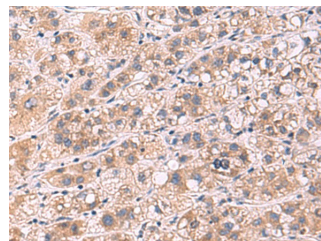
Data



Western blot analysis of 293T A549 and A172 cell lysates using PPEF1 Polyclonal Antibody at dilution of 1:1300

Observed-MW: Refer to figures

Calculated-MW: 76 kDa



Immunohistochemistry of paraffin-embedded Human liver cancer tissue using PPEF1 Polyclonal Antibody at dilution of 1:90 (×200)

Preparation & Storage

Storage	Store at -20°C Valid for 12 months. Avoid freeze / thaw cycles.
Shipping	The product is shipped with ice pack, upon receipt, store it immediately at the temperature recommended.

Background

This gene encodes a member of the serine/threonine protein phosphatase with EF-hand motif family. The protein contains a protein phosphatase catalytic domain, and at least two EF-hand calcium-binding motifs in its C terminus. Although its substrate(s) is unknown, the encoded protein has been suggested to play a role in specific sensory neuron function and/or development. This gene shares high sequence similarity with the Drosophila retinal degeneration C (rdgC) gene. Several alternatively spliced transcript variants, each encoding a distinct isoform, have been described.

For Research Use Only