

LXR alpha Polyclonal Antibody

catalog number: E-AB-70218

Note: Centrifuge before opening to ensure complete recovery of vial contents.

Description

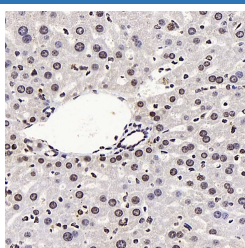
Reactivity	Mouse;Rat
Immunogen	KLH conjugated Synthetic peptide corresponding to Mouse LXR α
Host	Rabbit
Isotype	IgG
Purification	Affinity purification
Conjugation	Unconjugated
buffer	Phosphate buffered solution, pH 7.4, containing 0.05% stabilizer, 1% protein protectant and 50% glycerol.

Applications

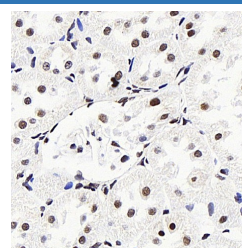
Recommended Dilution

IHC	1:400-1:1500
------------	--------------

Data



Immunohistochemistry analysis of paraffin-embedded mouse liver using LXR alpha Polyclonal Antibody at dilution of 1:400.



Immunohistochemistry analysis of paraffin-embedded rat kidney using LXR alpha Polyclonal Antibody at dilution of 1:400.

Preparation & Storage

Storage	Store at -20°C Valid for 12 months. Avoid freeze / thaw cycles.
Shipping	The product is shipped with ice pack,upon receipt,store it immediately at the temperature recommended.

Background

NR1H3,also known as LXRA,is a liver X receptors,which form a subfamily of the nuclear receptor superfamily and are key regulators of macrophage function,controlling transcriptional programs involved in lipid homeostasis and inflammation. It's also a ligand-activated LXRs and forms heterodimers with retinoid X receptor,then participates in regulating expression of target genes containing LXR response elements.

For Research Use Only