

GUCA1B Polyclonal Antibody

Catalog Number:E-AB-17991



Note: Centrifuge before opening to ensure complete recovery of vial contents.

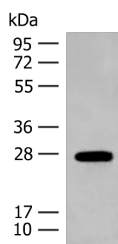
Description

| | |
|---------------------|--|
| Reactivity | Human, Mouse |
| Immunogen | Synthetic peptide of human GUCA1B |
| Host | Rabbit |
| Isotype | IgG |
| Purification | Antigen affinity purification |
| Conjugation | Unconjugated |
| Formulation | PBS with 0.05% NaN ₃ and 40% Glycerol,pH7.4 |

Applications Recommended Dilution

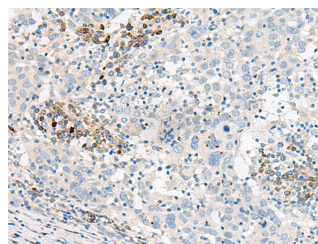
| | |
|--------------|----------------|
| WB | 1:500-1:2000 |
| IHC | 1:30-1:150 |
| ELISA | 1:5000-1:10000 |

Data



Western blot analysis of Mouse eye tissue lysate using GUCA1B Polyclonal Antibody at dilution of 1:500

Observed MW:Refer to figures
Calculated Mw:23 kDa



Immunohistochemistry of paraffin-embedded Human cervical cancer tissue using GUCA1B Polyclonal Antibody at dilution of 1:45(×200)

Preparation & Storage

Storage Store at -20°C. Avoid freeze / thaw cycles.

Background

The protein encoded by this gene is a calcium-binding protein that activates photoreceptor guanylate cyclases. This gene may have arisen due to a gene duplication event since there is a highly similar gene clustered with it on chromosome 6. Mutations in this gene can cause a form of retinitis pigmentosa.

For Research Use Only

A Reliable Research Partner in Life Science and Medicine

Toll-free: 1-888-852-8623

Web: www.elabscience.com

Tel: 1-832-243-6086

Email: techsupport@elabscience.com

Fax: 1-832-243-6017