

## EPB41L2 Polyclonal Antibody

**catalog number:** E-AB-63930

**Note:** Centrifuge before opening to ensure complete recovery of vial contents.

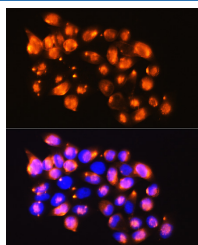
### Description

<b>Reactivity</b>	Human
<b>Immunogen</b>	Recombinant fusion protein of human EPB41L2 (NP_001186317.1).
<b>Host</b>	Rabbit
<b>Isotype</b>	IgG
<b>Purification</b>	Affinity purification
<b>Buffer</b>	Phosphate buffered solution, pH 7.4, containing 0.05% stabilizer and 50% glycerol.

### Applications

Applications	Recommended Dilution
IF	1:50-1:200

### Data



Immunofluorescence analysis of HeLa cells using EPB41L2 Polyclonal Antibody at dilution of 1:100. Blue: DAPI for nuclear staining.

### Preparation & Storage

<b>Storage</b>	Store at -20°C Valid for 12 months. Avoid freeze / thaw cycles.
<b>Shipping</b>	The product is shipped with ice pack, upon receipt, store it immediately at the temperature recommended.

### Background

EPB41L2 (Erythrocyte Membrane Protein Band 4.1 Like 2) is a Protein Coding gene. Diseases associated with EPB41L2 include Hereditary Elliptocytosis. Among its related pathways are Protein-protein interactions at synapses and Transmission across Chemical Synapses. Gene Ontology (GO) annotations related to this gene include actin binding and cytoskeletal protein binding. An important paralog of this gene is EPB41L3.

### For Research Use Only