

SERPINA9 Polyclonal Antibody

Catalog Number:E-AB-13030

Note: Centrifuge before opening to ensure complete recovery of vial contents.

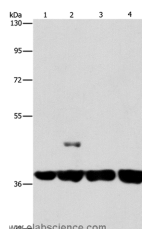
Description

Reactivity	Human
Immunogen	Synthetic peptide of human SERPINA9
Host	Rabbit
Isotype	IgG
Purification	Affinity purification
Conjugation	Unconjugated
Formulation	PBS with 0.05% sodium azide and 50% glycerol, PH7.4

Applications Recommended Dilution

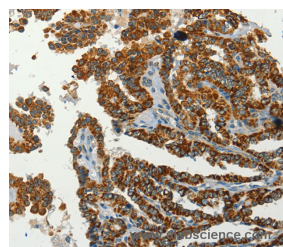
WB	1:500-1:2000
IHC	1:50-1:200

Data

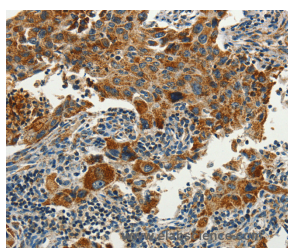


Western Blot analysis of 293T and 231 cell, U937 and Raji cell using SERPINA9 Polyclonal Antibody at dilution of 1:350

Calculated Mw:47kDa



Immunohistochemistry of paraffin-embedded Human thyroid cancer using SERPINA9 Polyclonal Antibody at dilution of 1:60



Immunohistochemistry of paraffin-embedded Human lung cancer using SERPINA9 Polyclonal Antibody at dilution of 1:60

Preparation & Storage

Storage Store at -20°C. Avoid freeze / thaw cycles.

Background

Serpin A9 also known as centerin or GCET1 is a protein that in humans is encoded by the SERPINA9 gene located on chromosome 14q32.1.[1] Serpin A9 is a member of the serpin family of serine protease inhibitors. The expression of SERPINA9 is restricted to germinal center B cells and lymphoid malignancies. SERPINA9 is likely to function in vivo in

For Research Use Only

A Reliable Research Partner in Life Science and Medicine

Toll-free: 1-888-852-8623

Web: www.elabscience.com

Tel: 1-832-243-6086

Email: techsupport@elabscience.com

Fax: 1-832-243-6017

SERPINA9 Polyclonal Antibody

Catalog Number:E-AB-13030



the germinal center as an efficient inhibitor of trypsin-like proteases. Highly expressed in normal germinal center (GC) B-cells and GC B-cell-derived malignancies.

For Research Use Only

A Reliable Research Partner in Life Science and Medicine

Toll-free: 1-888-852-8623

Tel: 1-832-243-6086

Fax: 1-832-243-6017

Web: www.elabscience.com

Email: techsupport@elabscience.com