

QNs (Quinolones) ELISA Kit

Catalog No: E-FS-E034

96T/96T*3

Version Number:	V1.3
Replace version:	V1.2
Revision Date:	2025.04.27

This manual must be read attentively and completely before using this product.

If you have any problems, please contact our Technical Service Center for help.

Toll-free: 1-888-852-8623 Tel: 1-832-243-6086 Fax: 1-832-243-6017

Email: techsupport@elabscience.com

Website: www.elabscience.com

Please kindly provide us the lot number (on the outside of the box) of the kit for more efficient service.

Test principle

This kit uses Competitive-ELISA as the method for the quantitative detection. It can detect Quinolones (QN_s) in samples, such as milk, muscle, honey, etc. This kit is composed of ELISA Microtiter plate, HRP conjugate, antibody working solution, standard and other supplementary reagents. The microtiter plate in this kit has been pre-coated with coupled antigen. During the reaction, QN_s in the samples or standard competes with coupled antigen on the solid phase supporter for sites of anti-QN_s antibody. Horseradish Peroxidase (HRP) conjugate is added to each microtiter plate well to catalyze substrate reagent make a coloration. There is a negative correlation between the OD value of samples and the concentration of QN_s. The concentration of QN_s in the samples can be calculated by comparing the OD of the samples to the standard curve.

Technical indicator

Reaction mode (Incubation time and temperature): 25°C; 30min, 15min.

Detection limit: Muscle (Fish, Shrimp-Method 1) ---1 ppb; Muscle (Chicken, Duck, Pork, Beef, Lamb -Method 1) ---2 ppb; Muscle (Chicken, Duck -Method 2) ---5 ppb; Muscle (Pork, Beef, Lamb-Method 2), Milk, Milk powder, Eggs, Bovine serum ---10 ppb; Muscle (Liver, Bullfrog, Fish, Shrimp-Method 3)---30 ppb; Pork urine---30 ppb; Feed---100 ppb.

Cross-reactivity:

Ciprofloxacin	100%
Oxolinic acid	181%
Peflacin	132%
Danofloxacin	127%
Lomefloxacin	119%
Norfloxacin	115%
Marbofloxacin	108%
Flumequine	107%
Enoxacin	98%
Enrofloxacin	97%
Ofloxacin (racemate)	38%

Sample recovery rate: 90%±30%

Kits components

Item	Specifications
ELISA Microtiter plate	96 wells
Standard Liquid	1.5 mL each (ppb=ng/mL=ng/g) (0 ppb, 0.3 ppb, 0.9 ppb, 2.7 ppb, 8.1 ppb, 24.3 ppb)

HRP Conjugate	7 mL
Antibody Working Solution	7 mL
Substrate Reagent A	7 mL
Substrate Reagent B	7 mL
Stop Solution	7 mL
20×Concentrated Wash Buffer	25 mL
20×Concentrated Sample Diluent	50 mL
Plate Sealer	3 pieces
Sealed Bag	1 piece
Manual	1 copy

Note: All reagent bottle caps must be tightened to prevent evaporation and microbial pollution.

Other materials required but not supplied

Instruments: Microplate reader, Printer, Homogenizer, Nitrogen evaporators, Water bath, Vortex mixer, Centrifuge, Graduated pipette, Balance (sensitivity 0.01g).

Micropipette: Single channel (20-200 µL, 100-1000 µL), Multichannel (30-300 µL).

Reagents: Acetonitrile, N-hexane, HCl.

Notes

1. The overall OD value will be lower when reagents have not been brought to room temperature before use or room temperature is below 25°C.
2. If the wells turn dry during the washing procedure, it will lead to bad linear standard curve and poor repeatability. Operate the next step immediately after wash.
3. Mix thoroughly and wash the plate completely. The consistency of wash procedure can strongly affect the reproducibility of this ELISA kit.
4. FOR RESEARCH USE ONLY. ELISA Microtiter plate should be covered by plate sealer. Avoid the kit to strong light.
5. **Each reagent is optimized for use in the E-FS-E034. Do not substitute reagents from any other manufacturer into the test kit. Do not combine reagents from other E-FS-E034 with different lot numbers.**
6. Substrate Reagent should be abandoned if it turns blue color. When OD value of standard (concentration: 0) < 0.8 unit (A450nm < 0.8), it indicates the reagent be deteriorated.
7. Stop solution is caustic, avoid contact with skin and eyes.
8. As the OD values of the standard curve may vary according to the conditions of the actual assay performance (e.g. operator, pipetting technique, washing technique or temperature effects), the operator should establish a standard curve for each test.
9. Even the same operator might get different results in two separate experiments. In order to get

reproducible results, the operation of every step in the assay should be controlled.

10. **For mentioned sample fast and efficient extraction methods are included in the kit description. Please consult technical support for the applicability if other sample need to be tested.**
11. After adding the sample diluent and acetonitrile, the mixture must be vortexed immediately and thoroughly to disperse the tissue as much as possible. This operation directly impacts the test results.
12. If the sample has degraded, false negatives may appear during testing and the recovery rate will be low. It is recommended to use fresh samples.
13. If the **20×Concentrated Sample Diluent** precipitates crystallization, it needs to be warmed at room temperature and can be used until the crystallization dissolves.
14. If the **Antibody Working Solution** and **20×Concentrated Sample Diluent** develop crystallization, they need to be brought to room temperature and can only be used after the crystals have dissolved.
15. The kit is used for rapid screening of actual samples. If the test result is positive, the instrument method such as HPLC, LC/MS, etc. can be used for quantitative confirmation.

Storage and expiry date

Store the kit at 2-8°C. Do not freeze any test kit components.

Return any unused microwells to their original foil bag and reseal them together with the desiccant provided and further store at 2-8°C.

Expiry date: expiration date is on the packing box.

Experimental preparation

Restore all reagents and samples to room temperature (25°C) before use.

Open the microplate reader in advance, preheat the instrument, and set the testing parameters.

1. Sample pretreatment Notice:

Experimental apparatus should be clean, and the pipette should be disposable to avoid cross-contamination during the experiment.

2. Solution preparation

Please prepare solution according to the number of samples. Don't use up all components in the kit at once!

Solution 1: 0.2 M HCl Solution

Dilute 1.72 mL of **HCl** to 100 mL with deionized water, mix fully.

Solution 2: Sample Diluent A

Dilute **20×Concentrated Sample Diluent** with deionized water. (20×Concentrated Sample Diluent (V): Deionized water (V) = 1:9).

Solution 3: Sample Diluent B

Take 100mL **Sample diluent A**, add 1gNaCl solid, mix well and set aside.

Solution 4: Wash Buffer

Dilute **20×Concentrated Wash Buffer** with deionized water. (20×Concentrated Wash Buffer (V): Deionized water (V) = 1:19).

3. Sample pretreatment procedure

3.1 Pretreatment of Muscle (fish, shrimp, chicken, duck, pig, cow, sheep) sample (Method 1):

- (1) Weigh 1 ± 0.05 g of muscle homogenate into a centrifuge tube.
- (2) **For Fish, shrimp:**
Add 0.5 mL of **20×Concentrated Sample Diluent** and vortex for 30s.
For Chickens, ducks, pigs, cows, sheep:
Add 0.5 mL of **0.2 M HCl Solution** (Solution 1) and vortex for 30s.
- (3) Add 4.5 mL acetonitrile, Vortex immediately for two minutes until the tissue is completely dispersed. Centrifuge for 5 min at 4000 rpm at room temperature.
- (4) Remove 3 mL of the clear upper organic layer solution to a new centrifuge tube, dry at 50-60°C with nitrogen evaporators or water bath. (Please do it in a ventilated environment.)
- (5) Add 2 mL of **N-hexane** and vortex for 30s. Then add 1 mL of **Sample Diluent A** (Solution 2) and vortex for 30 s to mix fully. Centrifuge for 5 min at 4000 rpm at room temperature.
- (6) Remove the N-hexane upper layer, take 50 μ L of the lower water layer solution for analysis.
Note: Sample dilution factor: 2, detection limit: 1 ppb (Fish, shrimp); 2 ppb (Chicken, duck, pig, cow, sheep)

3.2 Pretreatment of Muscle (Chicken, duck, pig, cow, sheep) sample (Method 2):

- (1) Weigh 1 ± 0.05 g of muscle homogenate into a 50 mL centrifuge tube.
- (2) Add 9.5mL deionized water and 0.5mL **20×Concentrated Sample Diluent** successively, Vortex immediately for two minutes until the tissue is completely dispersed.
- (3) Then centrifuge at 4000 rpm for 10 min at room temperature.
- (4) Immediately take 50 μ L of supernatant for detection.
Note: Sample dilution factor: 10, detection limit: 5 ppb (Chickens, ducks); 10 ppb (pig, cow, sheep)

3.3 Pretreatment of Milk powder sample:

- (1) Weigh 1 ± 0.05 g milk powder sample, add 10mL deionized water, swirl fully for 1 minute, take 100 μ L sample in the centrifuge tube.
- (2) Add 900 μ L **Sample Diluent B** (Solution 3), Vortex for 30s.
- (3) Take 50 μ L for analysis.
Note: Sample dilution factor: 10, detection limit: 10 ppb

3.4 Pretreatment of Raw milk ,Bovine serum, Egg sample:

- (1) Pipette 100 μ L of the homogenized sample into a centrifuge tube.
- (2) Add 900 μ L **Sample Diluent B** (Solution 3), Vortex for 30s.
- (3) Take 50 μ L for analysis.
Note: Sample dilution factor: 10, detection limit: 10 ppb

3.5 Pretreatment of Muscle (fish, shrimp, bullfrog, pork liver)sample (Method 3)

- (1) Weigh 1 ± 0.05 g of muscle homogenate into a 50 mL centrifuge tube.
- (2) Add 9.5 mL of deionized water and 0.5 mL of 0.2 M HCl (solution 1) sequentially, vortex thoroughly for 1 min until the tissue is completely dispersed;
- (3) Centrifuge at 4000 g for 5 min;
- (4) Transfer 200 μ L of the supernatant into a new centrifuge tube, add 200 μ L of Sample Diluent A (solution 2) and 200 μ L of deionized water, vortex thoroughly for 30 s;
- (5) Take 50 μ L for analysis.

Note: Sample dilution factor: 30, detection limit: 30 ppb

3.6 Pretreatment of Pork urine sample

- (1) Pipette 100 μ L of the homogenized sample into a centrifuge tube.
- (2) Add 900 μ L **Sample Diluent A** (Solution 2), Vortex for 30s.
- (3) Take 50 μ L for analysis.

Note: Sample dilution factor: 10, detection limit: 30 ppb

3.7 Pretreatment of Processed meat products sample

- (1) Weigh 0.5 ± 0.05 g of muscle homogenate into a 50 mL centrifuge tube.
- (2) Add 9.5 mL of deionized water and 0.5 mL of **20×Concentrated Sample Diluent** sequentially, vortex thoroughly for 1 min until the tissue is completely dispersed;
- (3) Centrifuge at 4000 g for 5 min;
- (4) Take 50 μ L for analysis.

Note: Sample dilution factor: 20, detection limit: 30 ppb

Assay procedure

Restore all reagents and samples to room temperature (25°C) before use. All the reagents should be mixed thoroughly by gently swirling before pipetting. Avoid foaming. The unused ELISA Microtiter plate should be sealed as soon as possible and stored at 2-8°C.

1. **Number:** number the sample and standard in order (multiple well), and keep a record of standard wells and sample wells. **Standard and Samples need test in duplicate.**
2. **Add Sample:** add 50 μ L of **Standard** or **Sample** per well, then add 50 μ L of **HRP Conjugate** to each well. Add 50 μ L of **Antibody Working Solution**. (Ensure that the reagents are added in the correct order.) Gently oscillate for 5 s to mix thoroughly and cover the plate with plate sealer. Incubate at 25°C for 30 min in shading light.

Note: Standards, HRP Conjugate, and Antibody Working Solution must be added in the specified order!

3. **Wash:** uncover the sealer carefully, remove the liquid in each well. Immediately add 260 μ L of **Wash Buffer** (Solution 4) to each well and wash. Repeat the wash procedure for 5 times, 30 s intervals/time. Invert the plate and pat it against thick clean absorbent paper (If bubbles exist in the wells, clean tips can be used to prick them).

4. **Color Development:** add 100 μL of **Substrate Reagent A** and **Substrate Reagent B** mixture. (**Substrate Reagent A** and **Substrate Reagent B** are mixed 1:1 according to volume, must be fully mixed, the mixture is used within 5 minutes, avoid the use of metal costumes, avoid stirring reagents.) Gently oscillate for 5 s to mix thoroughly. Incubate 25°C for 15-20 min at in shading light.
5. **Stop Reaction:** add 50 μL of **Stop Solution** to each well, oscillate gently to mix thoroughly.
6. **OD Measurement:** determine the optical density (OD value) of each well at 450 nm (reference wavelength 630 nm) with a microplate reader. This step should be finished in 10 min after stop reaction.

Result analysis

1. Absorbance(%)= $A/A_0 \times 100\%$

A: Average absorbance of standard or sample

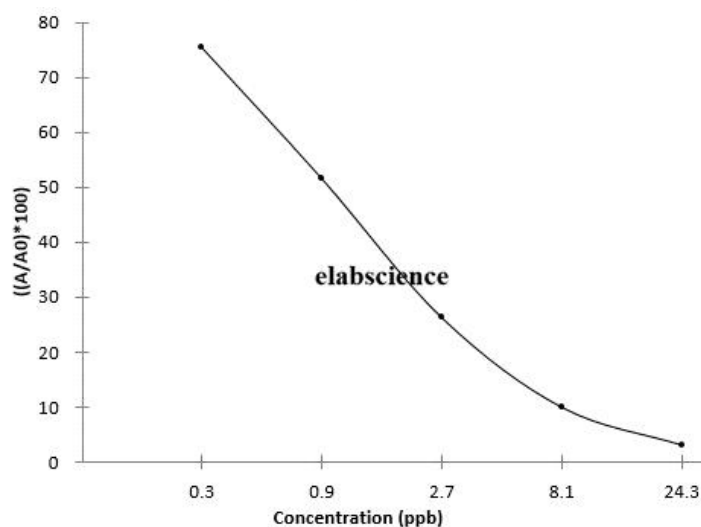
A_0 : Average absorbance of 0 ppb Standard

2. Drawing and calculation of standard curve

Create a standard curve by plotting the absorbance percentage of each standard on the y-axis against the log concentration on the x-axis to draw a semi-logarithmic plot. Add average absorbance value of sample to standard curve to get corresponding concentration. **If samples have been diluted, the concentration calculated from the standard curve must be multiplied by the dilution factor.**

For this kit, it is more convenient to use professional analysis form for accurate and fast analysis of batch samples.

Quinolones (E-FS-E034) Standard Curve



Copyright ©2023-2024 Elabscience Bionovation Inc. All Rights Reserved