

CDV3 Polyclonal Antibody

catalog number: **E-AB-92062**

Note: Centrifuge before opening to ensure complete recovery of vial contents.

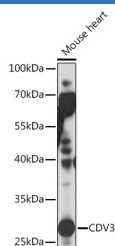
Description

Reactivity	Mouse;Rat
Immunogen	A synthetic peptide of human CDV3
Host	Rabbit
Isotype	IgG
Purification	Affinity purification
Buffer	Phosphate buffered solution, pH 7.4, containing 0.05% stabilizer and 50% glycerol.

Applications

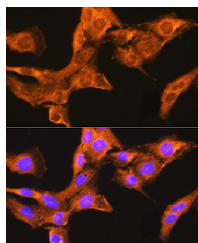
Applications	Recommended Dilution
WB	1:500-1:2000
IF	1:50-1:200

Data

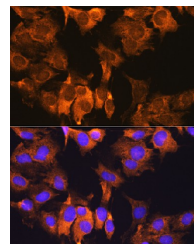


Western blot analysis of extracts of Mouse heart using CDV3 Polyclonal Antibody at 1:1000 dilution.

Observed-MW:27 kDa



Immunofluorescence analysis of L929 cells using CDV3 Polyclonal Antibody at dilution of 1:100. Blue: DAPI for nuclear staining.



Immunofluorescence analysis of C6 cells using CDV3 Polyclonal Antibody at dilution of 1:100. Blue: DAPI for nuclear staining.

Preparation & Storage

Storage	Store at -20°C Valid for 12 months. Avoid freeze / thaw cycles.
Shipping	The product is shipped with ice pack, upon receipt, store it immediately at the temperature recommended.

Background

Located in cytosol and plasma membrane.

For Research Use Only