

BCAT2 Polyclonal Antibody

Catalog Number: E-AB-10996

Note: Centrifuge before opening to ensure complete recovery of vial contents.

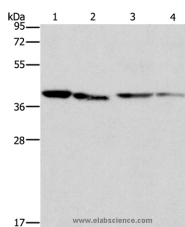
Description

Reactivity	Human, Mouse, Rat
Immunogen	Recombinant protein of human BCAT2
Host	Rabbit
Isotype	IgG
Purification	Affinity purification
Conjugation	Unconjugated
Formulation	PBS with 0.05% sodium azide and 50% glycerol, PH7.4

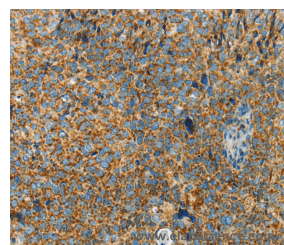
Applications Recommended Dilution

WB	1:200-1:1000
IHC	1:100-1:300

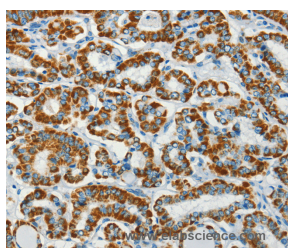
Data



Western Blot analysis of Human placenta tissue and NIH/3T3 cell, Raji and hepG2 cell using BCAT2 Polyclonal Antibody at dilution of 1:312.5
Calculated Mw:44kDa



Immunohistochemistry of paraffin-embedded Human cervical cancer using BCAT2 Polyclonal Antibody at dilution of 1:70



Immunohistochemistry of paraffin-embedded Human thyroid cancer using BCAT2 Polyclonal Antibody at dilution of 1:70

Preparation & Storage

Storage Store at -20°C. Avoid freeze / thaw cycles.

Background

This gene encodes a branched chain aminotransferase found in mitochondria. The encoded protein forms a dimer that catalyzes the first step in the production of the branched chain amino acids leucine, isoleucine, and valine. Multiple transcript variants encoding different isoforms have been found for this gene.

For Research Use Only

A Reliable Research Partner in Life Science and Medicine

Toll-free: 1-888-852-8623

Web: www.elabscience.com

Tel: 1-832-243-6086

Email: techsupport@elabscience.com

Fax: 1-832-243-6017