

Recombinant Phospho-TBK1 (Ser172) Monoclonal Antibody

catalog number: AN301141L

Note: Centrifuge before opening to ensure complete recovery of vial contents.

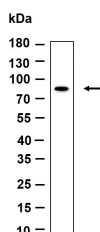
Description

| | |
|---------------------|---|
| Reactivity | Human;Mouse;Rat |
| Immunogen | A synthetic peptide corresponding to residues around (Ser172) of Human Phospho-TBK1 |
| Host | Rabbit |
| Isotype | IgG,k |
| Clone | 6H2 |
| Purification | Protein A |
| Buffer | PBS, 50% glycerol, 0.05% Proclin 300, 0.05% protein protectant. |

Applications Recommended Dilution

| | |
|-----------|----------------|
| WB | 1:2000-1:10000 |
|-----------|----------------|

Data



Western Blot with Recombinant Phospho-TBK1 (Ser172)
Monoclonal Antibody at dilution of 1:1000 dilution. Lane A:
Hela serum.

Observed-MW:84 kDa

Calculated-MW:84 kDa

Preparation & Storage

| | |
|-----------------|---|
| Storage | Store at -20°C Valid for 12 months. Avoid freeze / thaw cycles. |
| Shipping | Ice bag |

Background

The NF-kappa-B (NFKB) complex of proteins is inhibited by I-kappa-B (IKB) proteins, which inactivate NFKB by trapping it in the cytoplasm. Phosphorylation of serine residues on the IKB proteins by IKB kinases marks them for destruction via the ubiquitination pathway, thereby allowing activation and nuclear translocation of the NFKB complex. The protein encoded by this gene is similar to IKB kinases and can mediate NFKB activation in response to certain growth factors.

For Research Use Only

Toll-free: 1-888-852-8623
Web: www.elabscience.com

Tel: 1-832-243-6086
Email: techsupport@elabscience.com

Fax: 1-832-243-6017

Rev. V1.0