

Recombinant UQCRC2 Monoclonal Antibody

catalog number: **AN301063L**

Note: Centrifuge before opening to ensure complete recovery of vial contents.

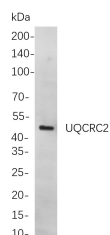
Description

Reactivity	Human;Mouse;Rat
Immunogen	Recombinant Human UQCRC2 protein
Host	Rabbit
Isotype	IgG, κ
Clone	B818
Purification	Protein A
Buffer	PBS, 50% glycerol, 0.05% Proclin 300, 0.05% protein protectant.

Applications

Applications	Recommended Dilution
IHC	1:200-1000
WB	1:1000-5000
IF	1:200-1000
ELISA	1:5000-20000
IP	1:50-200

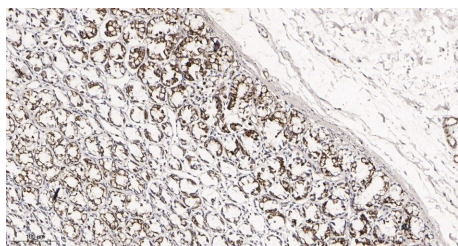
Data



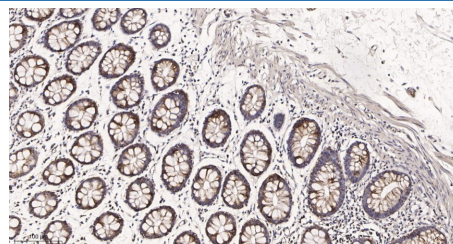
Western Blot with Recombinant UQCRC2 Monoclonal Antibody at dilution of 1:1000 dilution. Lane A: A172 cells.

Observed-MW:48 kDa

Calculated-MW:48 kDa



Immunohistochemistry of paraffin-embedded rat colon tissue using Recombinant UQCRC2 Monoclonal Antibody at dilution of 1:200.



Immunohistochemistry of paraffin-embedded human colon tissue using Recombinant UQCRC2 Monoclonal Antibody at dilution of 1:200.

Preparation & Storage

Storage	Store at -20°C Valid for 12 months. Avoid freeze / thaw cycles.
Shipping	Ice bag

Background

For Research Use Only

Toll-free: 1-888-852-8623
Web: www.elabscience.com

Tel: 1-832-243-6086
Email: techsupport@elabscience.com

Fax: 1-832-243-6017

Rev. V1.2

The protein encoded by this gene is located in the mitochondrion, where it is part of the ubiquinol-cytochrome c reductase complex (also known as complex III). This complex constitutes a part of the mitochondrial respiratory chain. Defects in this gene are a cause of mitochondrial complex III deficiency nuclear type 5.