

Elab Fluor® 647-conjugated alpha Tubulin Monoclonal Antibody

catalog number: AN00294M



Note: Centrifuge before opening to ensure complete recovery of vial contents.

Description

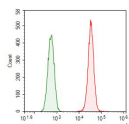
Reactivity	Human
Immunogen	Recombinant human TUBA1B protein by E. Coli
Host	Mouse
Isotype	IgG2a
Clone	2H2
Purification	Protein A/G Purification
Conjugation	Elab Fluor® 647(Ex/Em:650nm/665nm)
buffer	PBS with 0.05% proclin 300, 1% protective protein and 50% glycerol,pH7.4

Applications

Recommended Dilution

FCM	0.2 µg per 10 ⁶ cells in a 100 µL suspension
-----	---

Data



1X10⁶ HepG2 cells were intracellularly stained with 0.2 µg

Elab Fluor® 647-conjugated alpha Tubulin Monoclonal Antibody (red), or 0.2 µg Elab Fluor® 647-conjugated alpha Tubulin Monoclonal Antibody Isotype Control (green).

Preparation & Storage

Storage	Store at -20°C Valid for 12 months. Avoid freeze / thaw cycles. Protected from prolonged exposure to light.
Shipping	The product is shipped with ice pack, upon receipt, store it immediately at the temperature recommended.

Background

Tubulin is the major constituent of microtubules, a cylinder consisting of laterally associated linear protofilaments composed of alpha- and beta-tubulin heterodimers. Microtubules grow by the addition of GTP-tubulin dimers to the microtubule end, where a stabilizing cap forms. Below the cap, tubulin dimers are in GDP-bound state, owing to GTPase activity of alpha-tubulin.

For Research Use Only

A Reliable Research Partner in Life Science and Medicine
Tel: 400-999-2100

Email: techsupport@elabscience.cn

Web: www.elabscience.cn

Rev. V1.7