

Recombinant Human CDO1 Protein (His Tag)

Catalog Number: PKSH032330

Note: Centrifuge before opening to ensure complete recovery of vial contents.

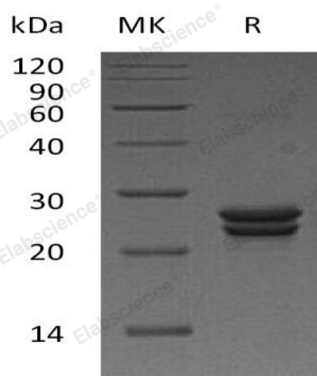
Description

| | |
|---------------------|----------------------------|
| Species | Human |
| Mol_Mass | 25.1 kDa |
| Accession | Q16878 |
| Bio-activity | Not validated for activity |

Properties

| | |
|-----------------------|--|
| Purity | > 95 % as determined by reducing SDS-PAGE. |
| Endotoxin | < 1.0 EU per µg of the protein as determined by the LAL method. |
| Storage | Store at < -20°C, stable for 6 months. Please minimize freeze-thaw cycles. |
| Shipping | This product is provided as liquid. It is shipped at frozen temperature with blue ice/gel packs. Upon receipt, store it immediately at < - 20°C. |
| Formulation | Supplied as a 0.2 µm filtered solution of 20mM Tris-HCl, 1mM DTT, 10% Glycerol, pH 8.0. |
| Reconstitution | Not Applicable |

Data



> 95 % as determined by reducing SDS-PAGE.

Background

Cysteine Dioxygenase Type 1 (CDO1) is a mammalian non-heme iron enzyme that belongs to the cysteine dioxygenase family. CDO1 is highly expressed in the liver and placenta, and has a low expression in heart, brain and pancreas. CDO1 can also be detected in hepatoblastoma HepG2 cells. CDO1 catalyzes the conversion of L-cysteine to cysteine sulfinic acid by incorporation of dioxygen. CDO1 is a vital regulator of cellular cysteine concentrations and has an essential role in maintaining the hepatic concentration of intracellular free cysteine within a proper narrow range. CDO1 is able to alter intracellular cysteine levels and glutathione levels.

For Research Use Only