

## (KO Validated) MSH2 Polyclonal Antibody

**catalog number: E-AB-92378**

**Note:** Centrifuge before opening to ensure complete recovery of vial contents.

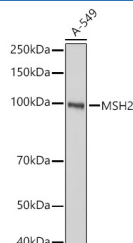
### Description

<b>Reactivity</b>	Human;Rat
<b>Immunogen</b>	Recombinant fusion protein of human MSH2
<b>Host</b>	Rabbit
<b>Isotype</b>	IgG
<b>Purification</b>	Affinity purification
<b>Buffer</b>	Phosphate buffered solution, pH 7.4, containing 0.05% stabilizer and 50% glycerol.

### Applications

<b>WB</b>	1:500-1:2000
<b>IP</b>	1:50-1:200

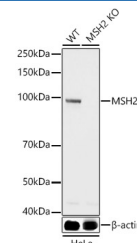
### Data



Western blot analysis of A-549 using MSH2 Polyclonal Antibody at 1:1000 dilution.

**Observed-MW:105 kDa**

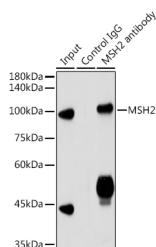
**Calculated-MW:97 kDa/104 kDa**



Western blot analysis of extracts from wild type (WT) and MSH2 knockout (KO) HeLa cells using MSH2 Polyclonal Antibody at 1:1000 dilution.

**Observed-MW:105 kDa**

**Calculated-MW:97 kDa/104 kDa**



Immunoprecipitation analysis of 300ug extracts of HeLa cells using 3ug MSH2 Polyclonal Antibody. Western blot was performed from the immunoprecipitate using MSH2 Polyclonal Antibody at a dilution of 1:3000.

**Observed-MW:105 kDa**

**Calculated-MW:97 kDa/104 kDa**

### Preparation & Storage

<b>Storage</b>	Store at -20°C Valid for 12 months. Avoid freeze / thaw cycles.
<b>Shipping</b>	The product is shipped with ice pack, upon receipt, store it immediately at the temperature recommended.

### Background

### For Research Use Only

This locus is frequently mutated in hereditary nonpolyposis colon cancer (HNPCC). When cloned, it was discovered to be a human homolog of the E. coli mismatch repair gene mutS, consistent with the characteristic alterations in microsatellite sequences (RER+ phenotype) found in HNPCC. Two transcript variants encoding different isoforms have been found for this gene.

## For Research Use Only

Toll-free: 1-888-852-8623  
Web: [www.elabscience.com](http://www.elabscience.com)

Tel: 1-832-243-6086  
Email: [techsupport@elabscience.com](mailto:techsupport@elabscience.com)

Fax: 1-832-243-6017

Rev. V1.7