

CNTN1 Polyclonal Antibody

catalog number: E-AB-19550

Note: Centrifuge before opening to ensure complete recovery of vial contents.

Description

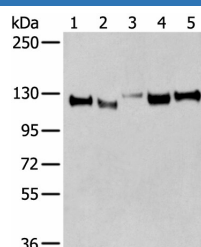
Reactivity	Human;Mouse;Rat
Immunogen	Synthetic peptide of human CNTN1
Host	Rabbit
Isotype	IgG
Purification	Antigen affinity purification
Conjugation	Unconjugated
buffer	Phosphate buffered solution, pH 7.4, containing 0.05% stabilizer and 50% glycerol.

Applications

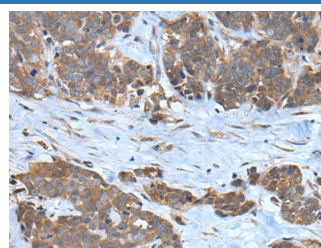
Recommended Dilution

WB	1:500-1:2000
IHC	1:25-1:100

Data



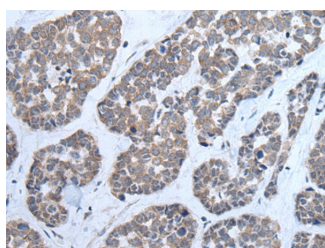
Western blot analysis of Human cerebella tissue Human cerebrum tissue Human fetal brain tissue Mouse brain tissue Rat brain tissue lysates using CNTN1 Polyclonal Antibody at dilution of 1:350



Immunohistochemistry of paraffin-embedded Human thyroid cancer tissue using CNTN1 Polyclonal Antibody at dilution of 1:35(×200)

Observed-MV: Refer to figures

Calculated-MV: 113 kDa



Immunohistochemistry of paraffin-embedded Human esophagus cancer tissue using CNTN1 Polyclonal Antibody at dilution of 1:35(×200)

Preparation & Storage

Storage	Store at -20°C Valid for 12 months. Avoid freeze / thaw cycles.
Shipping	The product is shipped with ice pack, upon receipt, store it immediately at the temperature recommended.

Background

For Research Use Only

CNTN1 Polyclonal Antibody

catalog number: E-AB-19550



The protein encoded by this gene is a member of the immunoglobulin superfamily. It is a glycosylphosphatidylinositol (GPI)-anchored neuronal membrane protein that functions as a cell adhesion molecule. It may play a role in the formation of axon connections in the developing nervous system. Multiple alternatively spliced transcript variants encoding different isoforms have been found for this gene.

For Research Use Only

A Reliable Research Partner in Life Science and Medicine
Tel: 400-999-2100

Email: techsupport@elabscience.cn

Web: www.elabscience.cn

Rev. V1.7