

CK-19 Polyclonal Antibody

catalog number: E-AB-70083

Note: Centrifuge before opening to ensure complete recovery of vial contents.

Description

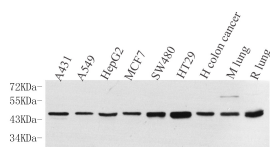
Reactivity	Human;Mouse;Rat
Immunogen	KLH conjugated Synthetic peptide corresponding to Mouse Cytokeratin 19
Host	Rabbit
Isotype	IgG
Purification	Affinity purification
Conjugation	Unconjugated
Buffer	Phosphate buffered solution, pH 7.4, containing 0.05% stabilizer, 1% protein protectant and 50% glycerol.

Applications

Recommended Dilution

WB	1:500-1:2000
IHC	1:200-1:800

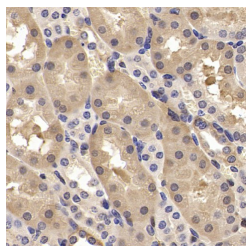
Data



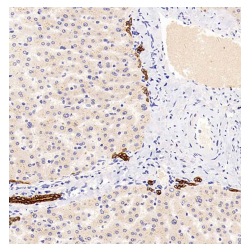
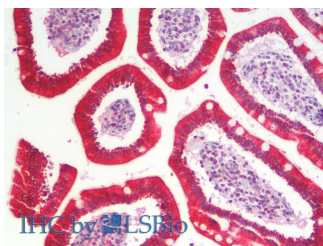
Western Blot analysis of various samples using CK-19 Polyclonal Antibody at dilution of 1:1000.

Observed-MW:44 kDa

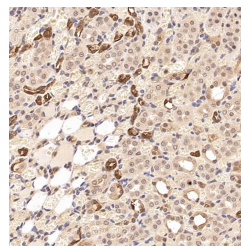
Calculated-MW:44 kDa



Immunohistochemistry analysis of paraffin-embedded mouse kidney using CK-19 Polyclonal Antibody at dilution of 1:300.



Immunohistochemistry analysis of paraffin-embedded human liver using CK-19 Polyclonal Antibody at dilution of 1:300.



Immunohistochemistry analysis of paraffin-embedded rat kidney using CK-19 Polyclonal Antibody at dilution of 1:300.

For Research Use Only

Immunohistochemistry analysis of paraffin-embedded
Human Small Intestine using CK-19 Polyclonal
Antibody (Elabscience Product Detected by Lifespan).

Preparation & Storage

Storage

Store at -20°C Valid for 12 months. Avoid freeze / thaw cycles.

Shipping

The product is shipped with ice pack, upon receipt, store it immediately at the temperature recommended.

Background

The keratins are intermediate filament proteins responsible for the structural integrity of epithelial cells. KRT19, one of type I keratins, is specifically expressed in the periderm, the transiently superficial layer that envelopes the developing epidermis. Due to its high sensitivity, KRT19 is the most used marker for detection of tumor cells disseminated in lymph nodes, peripheral blood, and bone marrow of breast cancer patients. This antibody, generated against full length KRT19 protein, also recognizes KRT17, another type I keratin homologous to KRT19. KRT17 is used as a marker for trauma.