

## VCAM1/CD106 Polyclonal Antibody

catalog number: AN007260L

**Note:** Centrifuge before opening to ensure complete recovery of vial contents.

### Description

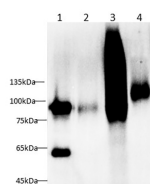
<b>Reactivity</b>	Mouse;Rat
<b>Immunogen</b>	Recombinant Mouse CD106 protein expressed by Mammalian
<b>Host</b>	Rabbit
<b>Isotype</b>	IgG
<b>Purification</b>	Antigen Affinity Purification
<b>Conjugation</b>	Unconjugated
<b>Buffer</b>	PBS with 0.05% Proclin300, 1% protective protein and 50% glycerol, pH7.4

### Applications

### Recommended Dilution

<b>WB</b>	1:1000-1:2000
-----------	---------------

### Data



Western blot with Anti VCAM1/CD106 Polyclonal antibody at dilution of 1:1000. Lane 1: NIH/3T3 cell lysate, Lane 2: Mouse kidney tissue lysate, Lane 3: Mouse spleen tissue lysate, Lane 4: Rat spleen tissue lysate.

**Observed-MW:100 kDa**

**Calculated-MW:81 kDa**

### Preparation & Storage

<b>Storage</b>	Store at -20°C Valid for 12 months. Avoid freeze / thaw cycles.
<b>Shipping</b>	The product is shipped with ice pack, upon receipt, store it immediately at the temperature recommended.

### Background

VCAM-1 (CD106), a member of the immunoglobulin superfamily, is a cell surface protein expressed by activated endothelial cells and certain leukocytes (such as macrophages). VCAM-1 expression is induced by IL-1 beta, IL-4, TNF-alpha and IFN-gamma. VCAM-1 binds to leukocyte integrins VLA-4 and alpha 4 beta 7. The human and mouse VCAM-1 proteins share approximately 76% amino acid similarity.