

# Vimentin Polyclonal Antibody

Catalog Number: E-AB-70081

3 Publications

 **DIA-AN**<sup>®</sup>  
by Elabscience

**Note:** Centrifuge before opening to ensure complete recovery of vial contents.

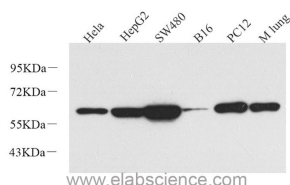
## Description

<b>Reactivity</b>	Human, Mouse, Rat
<b>Immunogen</b>	KLH conjugated Synthetic peptide corresponding to Mouse vimentin
<b>Host</b>	Rabbit
<b>Isotype</b>	IgG
<b>Purification</b>	Affinity purification
<b>Conjugation</b>	Unconjugated
<b>Formulation</b>	PBS with 0.02% sodium azide, 1% protective protein and 50% glycerol, pH7.4

## Applications Recommended Dilution

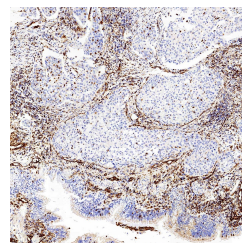
<b>WB</b>	1:500-1:2000
<b>IHC</b>	1:200-1:800

## Data

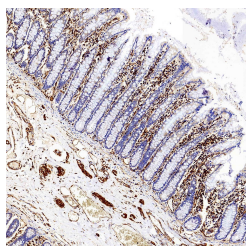


Western Blot analysis of various samples using Vimentin Polyclonal Antibody at dilution of 1:1000.

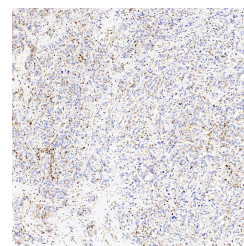
**Observed Mw:57kDa**  
**Calculated Mw:57kDa**



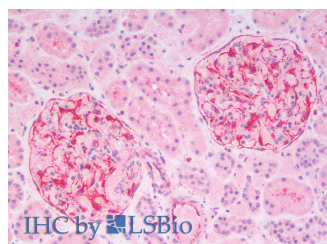
Immunohistochemistry analysis of paraffin-embedded Human lung cancer using Vimentin Polyclonal Antibody at dilution of 1:300.



Immunohistochemistry analysis of paraffin-embedded Human colon using Vimentin Polyclonal Antibody at dilution of 1:300.



Immunohistochemistry analysis of paraffin-embedded Human liver cancer using Vimentin Polyclonal Antibody at dilution of 1:300.



Immunohistochemistry analysis of paraffin-

## For Research Use Only

A Reliable Research Partner in Life Science and Medicine

Toll-free: 1-888-852-8623

Web: [www.elabscience.com](http://www.elabscience.com)

Tel: 1-832-243-6086

Email: [techsupport@elabscience.com](mailto:techsupport@elabscience.com)

Fax: 1-832-243-6017

# Vimentin Polyclonal Antibody

Catalog Number: E-AB-70081

3 Publications



embedded Human Kidney using Vimentin Polyclonal Antibody(Elabscience® Product Detected by Lifespan).

## Preparation & Storage

**Storage** Store at -20°C. Avoid freeze / thaw cycles.

## Background

Vimentin, also named as VIM, belongs to the intermediate filament family. Vimentin is class-III intermediate filaments found in various non-epithelial cells, especially mesenchymal cells. Vimentin is important for stabilizing the architecture of the cytoplasm. Monocyte-derived macrophages secrete vimentin into the extracellular space in vitro. Secretion of vimentin was enhanced by the proinflammatory cytokine tumor necrosis factor-alpha (TNFA; 191160) and inhibited by the antiinflammatory cytokine IL10 (124092), suggesting that vimentin is involved in the immune response. Vimentin has specialized functions that contribute to specific dynamic cellular processes. As a phosphoprotein, 55-60 kDa of vimentin proteins can be observed due to the different phosphorylation level.

## For Research Use Only

A Reliable Research Partner in Life Science and Medicine

Toll-free: 1-888-852-8623

Tel: 1-832-243-6086

Fax: 1-832-243-6017

Web: [www.elabscience.com](http://www.elabscience.com)

Email: [techsupport@elabscience.com](mailto:techsupport@elabscience.com)