

MPO Polyclonal Antibody

catalog number: E-AB-70091

Note: Centrifuge before opening to ensure complete recovery of vial contents.

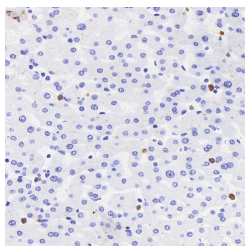
Description

Reactivity	Human;Mouse;Rat
Immunogen	KLH conjugated Synthetic peptide corresponding to Mouse MPO
Host	Rabbit
Isotype	IgG
Purification	Affinity purification
Buffer	Phosphate buffered solution, pH 7.4, containing 0.05% stabilizer, 1% protein protectant and 50% glycerol.

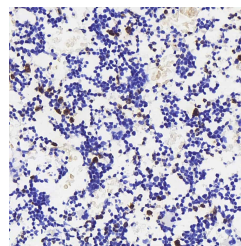
Applications

Applications	Recommended Dilution
IHC	1:500-1:1000
IF	1:200-1:500

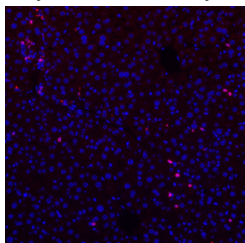
Data



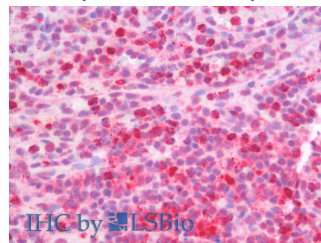
Immunohistochemistry analysis of paraffin-embedded human liver using MPO Polyclonal Antibody at dilution of 1:300.



Immunohistochemistry analysis of paraffin-embedded mouse bone using MPO Polyclonal Antibody at dilution of 1:300.



Immunofluorescence analysis of paraffin-embedded human liver using MPO Polyclonal Antibody at dilution of 1:300.



Immunohistochemistry analysis of paraffin-embedded Human Spleen using MPO Polyclonal Antibody(Elabscience Product Detected by Lifespan).

Preparation & Storage

Storage	Store at -20°C Valid for 12 months. Avoid freeze / thaw cycles.
Shipping	The product is shipped with ice pack, upon receipt, store it immediately at the temperature recommended.

Background

Myeloperoxidase (MPO) is a heme protein synthesized during myeloid differentiation that constitutes the major component of neutrophil azurophilic granules. Produced as a single chain precursor, myeloperoxidase is subsequently cleaved into a light and heavy chain. The mature myeloperoxidase is a tetramer composed of 2 light chains and 2 heavy chains. This enzyme produces hypohalous acids central to the microbicidal activity of neutrophils.

For Research Use Only