

## Recombinant Human TMEM25 Protein (His Tag)

**Catalog Number:** PKSH030565

**Note:** *Centrifuge before opening to ensure complete recovery of vial contents.*

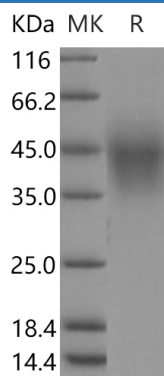
### Description

<b>Species</b>	Human
<b>Source</b>	HEK293 Cells-derived Human TMEM25 protein Met 1-Pro224, with an C-terminal His
<b>Calculated MW</b>	22.8 kDa
<b>Observed MW</b>	43 kDa
<b>Accession</b>	AAH51841.1
<b>Bio-activity</b>	Not validated for activity

### Properties

<b>Purity</b>	> 95 % as determined by reducing SDS-PAGE.
<b>Endotoxin</b>	< 1.0 EU per µg of the protein as determined by the LAL method.
<b>Storage</b>	Generally, lyophilized proteins are stable for up to 12 months when stored at -20 to -80°C. Reconstituted protein solution can be stored at 4-8°C for 2-7 days. Aliquots of reconstituted samples are stable at < -20°C for 3 months.
<b>Shipping</b>	This product is provided as lyophilized powder which is shipped with ice packs.
<b>Formulation</b>	Lyophilized from sterile PBS, pH 7.4 Normally 5% - 8% trehalose, mannitol and 0.01% Tween 80 are added as protectants before lyophilization. Please refer to the specific buffer information in the printed manual.
<b>Reconstitution</b>	Please refer to the printed manual for detailed information.

### Data



> 95 % as determined by reducing SDS-PAGE.

### Background

TMEM25 is a novel member of the immunoglobulin superfamily. Immunoglobulin superfamily members are implicated in immune responses, growth factor signaling, and cell adhesion. TMEM25 contains 1 Ig-like (immunoglobulin-like) domain and is a target of pharmacogenomics in the field of oncology and regenerative medicine. TMEM25 isoform 1, consisting of exons 1-9, encoded a 366-aa transmembrane protein. TMEM25 isoform 2, consisting of exons 1-4 and 6-9, encoded a 322-aa secreted protein. TMEM25 mRNA was expressed in brain, including cerebellar cortex and hippocampus, as well as in neuroblastoma, brain tumors, and gastric cancer. Human TMEM25 gene was located at the 11q23.3 oncogenomic recombination hotspot around the MLL amplicon and the neuroblastoma deleted region.

### For Research Use Only

Toll-free: 1-888-852-8623  
Web: [www.elabscience.com](http://www.elabscience.com)

Tel: 1-832-243-6086  
Email: [techsupport@elabscience.com](mailto:techsupport@elabscience.com)

Fax: 1-832-243-6017