

# Recombinant Human ApoD Protein(GST Tag)

Catalog Number: PDEH100457



**Note:** Centrifuge before opening to ensure complete recovery of vial contents.

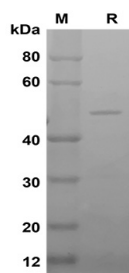
## Description

<b>Species</b>	Human
<b>Source</b>	E.coli-derived Human APOD protein Gln21~Ser189, with an N-terminal GST
<b>Mol_Mass</b>	44.7 kDa
<b>Accession</b>	P05090
<b>Bio-activity</b>	Not validated for activity

## Properties

<b>Purity</b>	> 95% as determined by reducing SDS-PAGE.
<b>Endotoxin</b>	< 10 EU/mg of the protein as determined by the LAL method
<b>Storage</b>	Generally, lyophilized proteins are stable for up to 12 months when stored at -20 to -80 °C. Reconstituted protein solution can be stored at 4-8°C for 2-7 days. Aliquots of reconstituted samples are stable at < -20°C for 3 months.
<b>Shipping</b>	This product is provided as lyophilized powder which is shipped with ice packs.
<b>Formulation</b>	Lyophilized from a 0.2 µm filtered solution in PBS with 5% Trehalose and 5% Mannitol.
<b>Reconstitution</b>	It is recommended that sterile water be added to the vial to prepare a stock solution of 0.5 mg/mL. Concentration is measured by UV-Vis

## Data



SDS-PAGE analysis of Human APOD proteins, 2µg/lane of

Recombinant Human APOD proteins was resolved with SDS-PAGE under reducing conditions, showing bands at 50

kDa

## Background

Apolipoprotein-D (ApoD) is an atypical apolipoprotein and, based on its primary structure, it also a member of the lipocalin family. ApoD is mainly associated with high density lipoproteins in human plasma. ApoD is expressed in numerous tissues having high levels of expression in spleen, testes and brain. ApoD plays a role in maintenance and repair within the central and peripheral nervous systems. ApoD occurs in the macromolecular complex with lecithin-cholesterol acyltransferase. It is a multi-ligand, multi-functional transporter and transports a ligand from 1 cell to another. ApoD is probably involved in the transport and binding of bilin, it appears to be able to transport a variety of ligands in a number of different contexts.

## For Research Use Only

A Reliable Research Partner in Life Science and Medicine  
Tel:400-999-2100

Email:[techsupport@elabscience.cn](mailto:techsupport@elabscience.cn)

Web:[www.elabscience.cn](http://www.elabscience.cn)

Rev. V1.0