

RNASE1 Polyclonal Antibody

Catalog Number: E-AB-19132



Note: Centrifuge before opening to ensure complete recovery of vial contents.

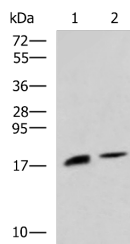
Description

Reactivity	Human, Mouse, Rat
Immunogen	Fusion protein of human RNASE1
Host	Rabbit
Isotype	IgG
Purification	Antigen affinity purification
Conjugation	Unconjugated
Formulation	PBS with 0.05% NaN ₃ and 40% Glycerol, pH7.4

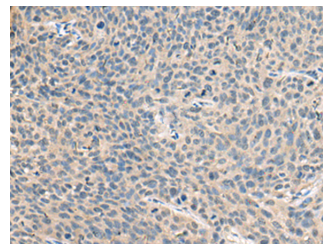
Applications Recommended Dilution

WB	1:500-1:2000
IHC	1:50-1:100
ELISA	1:5000-1:10000

Data



Western blot analysis of Rat pancreas tissue and Mouse pancreas tissue lysates using RNASE1 Polyclonal Antibody at dilution of 1:650
Observed MW: Refer to figures
Calculated Mw: 18 kDa



Immunohistochemistry of paraffin-embedded Human cervical cancer tissue using RNASE1 Polyclonal Antibody at dilution of 1:50 (x200)

Preparation & Storage

Storage Store at -20°C. Avoid freeze / thaw cycles.

Background

This gene encodes a member of the pancreatic-type of secretory ribonucleases, a subset of the ribonuclease A superfamily. The encoded endonuclease cleaves internal phosphodiester RNA bonds on the 3'-side of pyrimidine bases. It prefers poly(C) as a substrate and hydrolyzes 2',3'-cyclic nucleotides, with a pH optimum near 8.0. The encoded protein is monomeric and more commonly acts to degrade ds-RNA over ss-RNA. Alternative splicing occurs at this locus and four transcript variants encoding the same protein have been identified.

For Research Use Only

A Reliable Research Partner in Life Science and Medicine

Toll-free: 1-888-852-8623

Web: www.elabscience.com

Tel: 1-832-243-6086

Email: techsupport@elabscience.com

Fax: 1-832-243-6017