

CD284 Polyclonal Antibody

catalog number: E-AB-70079

Note: Centrifuge before opening to ensure complete recovery of vial contents.

Description

Reactivity	Human;Rat
Immunogen	KLH conjugated Synthetic peptide corresponding to Mouse TLR4
Host	Rabbit
Isotype	IgG
Purification	Affinity purification
Conjugation	Unconjugated
Buffer	Phosphate buffered solution, pH 7.4, containing 0.05% stabilizer, 1% protein protectant and 50% glycerol.

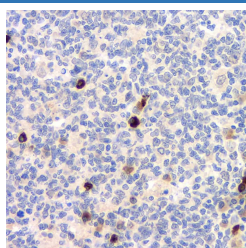
Applications

Recommended Dilution

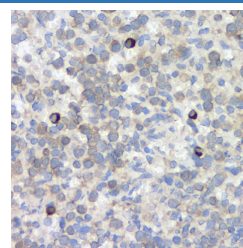
IHC

1:200-1:800

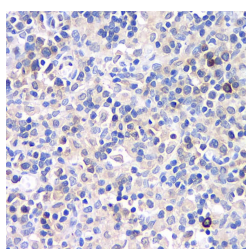
Data



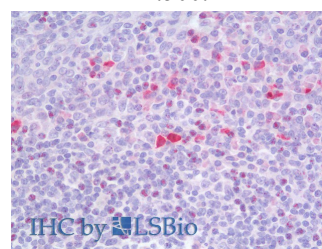
Immunohistochemistry analysis of paraffin-embedded human tonsil using CD284 Polyclonal Antibody at dilution of 1:500.



Immunohistochemistry analysis of paraffin-embedded rat spleen using CD284 Polyclonal Antibody at dilution of 1:500.



Immunohistochemistry analysis of paraffin-embedded rat lymph node using CD284 Polyclonal Antibody at dilution of 1:500.



Immunohistochemistry analysis of paraffin-embedded Human Tonsil using CD284 Polyclonal Antibody(Elabscience Product Detected by Lifespan).

Preparation & Storage

Storage

Store at -20°C Valid for 12 months. Avoid freeze / thaw cycles.

Shipping

The product is shipped with ice pack,upon receipt,store it immediately at the temperature recommended.

Background

TLR4,also named as CD284,belongs to the Toll-like receptor family. TLR4 cooperates with LY96 and CD14 to mediate the innate immune response to bacterial lipopolysaccharide (LPS). TLR4 acts via MYD88,TIRAP and TRAF6,leading to NF-kappa-B activation,cytokine secretion and the inflammatory response. Three alternatively spliced transcript variants that encode different protein isoforms have been described.

For Research Use Only