

## Recombinant Endoglin/CD105 Monoclonal Antibody

catalog number: **AN300012P**

**Note:** Centrifuge before opening to ensure complete recovery of vial contents.

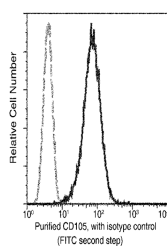
### Description

<b>Reactivity</b>	Human
<b>Immunogen</b>	Recombinant Human Endoglin / CD105 protein
<b>Host</b>	Rabbit
<b>Isotype</b>	IgG
<b>Clone</b>	3P7
<b>Purification</b>	Protein A
<b>Buffer</b>	0.2 µm filtered solution in PBS

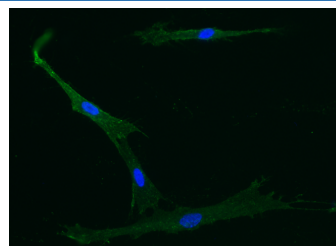
### Applications

Applications	Recommended Dilution
ICC/IF	1:20-1:100
FCM	1:25-1:100

### Data



Flow cytometric analysis of Human CD105 expression on HeLa cells.



Immunofluorescence staining of Human CD105 in MSC cells. Cells were fixed with 4% PFA, blocked with 10% serum, and incubated with rabbit anti-Human CD105 Monoclonal Antibody (1:60) at 37°C 1 hour. Then cells were stained with the Alexa Fluor® 488-conjugated goat Anti-rabbit IgG secondary antibody (green) and counterstained with DAPI for nuclear staining (blue). Positive staining was localized to cell membrane.

### Preparation & Storage

<b>Storage</b>	This antibody can be stored at 2°C-8°C for one month without detectable loss of activity. Antibody products are stable for twelve months from date of receipt when stored at -20°C to -80°C. Preservative-Free. Avoid repeated freeze-thaw cycles.
<b>Shipping</b>	Ice bag

### Background

Endoglin (CD105) is a 90 kDa type I transmembrane glycoprotein of the zona pellucida (ZP) family of proteins (1-3). Endoglin and Betaglycan/T beta RIII are type III receptors for TGF beta superfamily ligands, sharing 71% aa identity in the transmembrane (TM) and cytoplasmic domains. Endoglin is highly expressed on proliferating vascular endothelial cells, chondrocytes, and syncytiotrophoblasts of term placenta, with lower amounts on hematopoietic, mesenchymal and neural crest stem cells, activated monocytes, and lymphoid and myeloid leukemic cells.

### For Research Use Only