

LOX Polyclonal Antibody

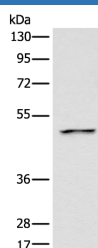
catalog number: E-AB-12255

Note: Centrifuge before opening to ensure complete recovery of vial contents.

| Description | |
|--------------|--|
| Reactivity | Human ;Mouse ;Rat |
| Immunogen | Synthetic peptide of human LOX |
| Host | Rabbit |
| Isotype | IgG |
| Purification | Affinity purification |
| Conjugation | Unconjugated |
| Buffer | Phosphate buffered solution, pH 7.4, containing 0.05% stabilizer and 50% glycerol. |

| Applications | Recommended Dilution |
|--------------|----------------------|
| WB | 1:500-1:2000 |

Data



Western Blot analysis of Mouse liver tissue using LOX

Polyclonal Antibody at dilution of 1:400

Observed-MW:Refer to figures

Calculated-MW:47 kDa

Preparation & Storage

| | |
|----------|--|
| Storage | Store at -20°C Valid for 12 months. Avoid freeze / thaw cycles. |
| Shipping | The product is shipped with ice pack,upon receipt,store it immediately at the temperature recommended. |

Background

The protein encoded by this gene is an extracellular copper enzyme that initiates the crosslinking of collagens and elastin. The enzyme catalyzes oxidative deamination of the epsilon-amino group in certain lysine and hydroxylysine residues of collagens and lysine residues of elastin. In addition to crosslinking extracellular matrix proteins, the encoded protein may have a role in tumor suppression. Defects in this gene are a cause of autosomal recessive cutis laxa type I (CL type I). Two transcript variants encoding different isoforms have been found for this gene.

For Research Use Only