

Recombinant Human Alpha-Synuclein/SNCA Protein (His Tag)

Catalog Number: PKSH033254

Note: Centrifuge before opening to ensure complete recovery of vial contents.

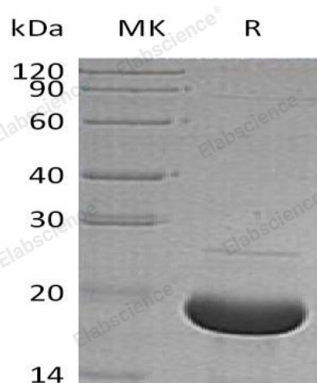
Description

Species	Human
Source	E.coli-derived Human Alpha-Synuclein/SNCA protein Met 1-Ala140, with an N-terminal His
Calculated MW	16.7 kDa
Observed MW	18 kDa
Accession	P37840
Bio-activity	Not validated for activity

Properties

Purity	> 95 % as determined by reducing SDS-PAGE.
Endotoxin	< 1.0 EU per µg of the protein as determined by the LAL method.
Storage	Generally, lyophilized proteins are stable for up to 12 months when stored at -20 to -80 °C. Reconstituted protein solution can be stored at 4-8°C for 2-7 days. Aliquots of reconstituted samples are stable at < -20°C for 3 months.
Shipping	This product is provided as lyophilized powder which is shipped with ice packs.
Formulation	Lyophilized from a 0.2 µm filtered solution of 20mM PB, 150mM NaCl, pH 7.4. Normally 5% - 8% trehalose, mannitol and 0.01% Tween 80 are added as protectants before lyophilization.
	Please refer to the specific buffer information in the printed manual.
Reconstitution	Please refer to the printed manual for detailed information.

Data



> 95 % as determined by reducing SDS-PAGE.

Background

Alpha-Synuclein (SNCA) is a member of the Synuclein family. SNCA is expressed principally in brain but also expressed in low concentrations in all tissues except liver. SNCA interacts with UCHL1; Phospholipase D and histones. SNCA can include beta- and gamma-synuclein. In addition; SNCA is an important regulatory component of vesicular transport in neuronal cells. It has been suggested that SNCA is related to the pathogenesis of Parkinson's Disease and neurodegenerative disorders. Defects in SNCA will lead to Dementia Lewy Body (DLB).

For Research Use Only

Toll-free: 1-888-852-8623
Web: www.elabscience.com

Tel: 1-832-243-6086
Email: techsupport@elabscience.com

Fax: 1-832-243-6017