

Recombinant Human Lamin B1 Protein(His Tag)

Catalog Number: PDEH100763

Note: *Centrifuge before opening to ensure complete recovery of vial contents.*

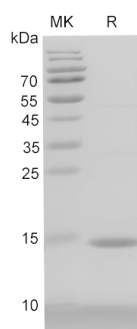
Description

Species	Human
Source	E.coli-derived Human Lamin B1 protein Ser428-Ile550, with an N-terminal His
Calculated MW	13.4 kDa
Observed MW	14 kDa
Accession	P20700
Bio-activity	Not validated for activity

Properties

Purity	> 90% as determined by reducing SDS-PAGE.
Endotoxin	< 10 EU/mg of the protein as determined by the LAL method
Storage	Generally, lyophilized proteins are stable for up to 12 months when stored at -20 to -80°C. Reconstituted protein solution can be stored at 4-8°C for 2-7 days. Aliquots of reconstituted samples are stable at < -20°C for 3 months.
Shipping	This product is provided as lyophilized powder which is shipped with ice packs.
Formulation	Lyophilized from a 0.2 µm filtered solution in PBS with 5% Trehalose and 5% Mannitol.
Reconstitution	It is recommended that sterile water be added to the vial to prepare a stock solution of 0.5 mg/mL. Concentration is measured by UV-Vis.

Data



SDS-PAGE analysis of Human Lamin B1 proteins, 2 µg/lane of Recombinant Human Lamin B1 proteins was resolved with SDS-PAGE under reducing conditions, showing bands at 14 kDa.

Background

Lamins are components of the nuclear lamina, a fibrous layer on the nucleoplasmic side of the inner nuclear membrane, which is thought to provide a framework for the nuclear envelope and may also interact with chromatin.

For Research Use Only

Toll-free: 1-888-852-8623
Web: www.elabscience.com

Tel: 1-832-243-6086
Email: techsupport@elabscience.com

Fax: 1-832-243-6017

Rev. V1.5